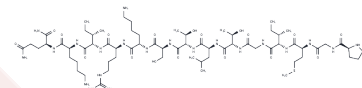


Levitide

Chemical Properties

CAS No. :	114281-19-5
Formula:	C ₆₆ H ₁₁₉ N ₂₁ O ₁₉ S
Molecular Weight:	1542.85
Storage:	Keep away from moisture Powder: -20°C for 3 years In solvent: -80°C for 1 year <small>Actual storage temperature shall be subject to the COA.</small>



Biological Description

Description	Levitide is a neurohormone-like peptide which is from the skin of <i>Xenopus laevis</i> .
Targets(IC50)	Neuropeptide Y Receptor

Solubility Information

Solubility	DMSO: Soluble, (< 1 mg/ml refers to the product slightly soluble or insoluble)
------------	--

Preparing Stock Solutions

	1mg	5mg	10mg
1 mM	0.6482 mL	3.2408 mL	6.4815 mL
5 mM	0.1296 mL	0.6482 mL	1.2963 mL
10 mM	0.0648 mL	0.3241 mL	0.6482 mL
50 mM	0.013 mL	0.0648 mL	0.1296 mL

Please select the appropriate solvent to prepare the stock solution, according to the solubility of the product in different solvents. Please use it as soon as possible.

Note: The dilution table applies only to solid products. For liquid products, please calculate the stock solution based on the stated concentration and/or density.

Reference

- Shigeri Y, Yasuda A, Hagihara Y, Nishi K, Watanabe K, Imura T, Inagaki H, Haramoto Y, Ito Y, Asashima M. Identification of novel peptides from amphibian (*Xenopus tropicalis*) skin by direct tissue MALDI-MS analysis. *FEBS J*. 2015 Jan;282(1):102-13. doi: 10.1111/febs.13107. Epub 2014 Oct 30. PubMed PMID: 25312021.
- Poulter L, Terry AS, Williams DH, Giovannini MG, Moore CH, Gibson BW. Levitide, a neurohormone-like peptide from the skin of *Xenopus laevis*. Peptide and peptide precursor cDNA sequences. *J Biol Chem*. 1988 Mar 5;263(7):3279-83. PubMed PMID: 2830279.
- Kuchler K, Kreil G, Sures I. The genes for the frog skin peptides GLa, xenopsin, levitide and caerulein contain a homologous export exon encoding a signal sequence and part of an amphiphilic peptide. *Eur J Biochem*. 1989 Feb 1;179(2):281-5. PubMed PMID: 2465151.
- Carraway RE, Mitra SP. Isolation and sequence of canine xenopsin and an extended fragment from its precursor. *Peptides*. 1990 Jul-Aug;11(4):747-52. PubMed PMID: 2235681.

Inhibitor · Natural Compounds · Compound Libraries · Recombinant Proteins

This product is for Research Use Only · Not for Human or Veterinary or Therapeutic Use

Tel:781-999-4286 E_mail:info@targetmol.com Address:34 Washington Street,Wellesley Hills,MA 02481