

C16 Ceramide

Chemical Properties

CAS No. : 24696-26-2

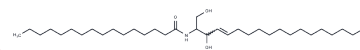
Formula: C34H67NO3

Molecular Weight: 537.90

Store at low temperature

Storage: Powder: -20°C for 3 years | In solvent: -80°C for 1 year

Actual storage temperature shall be subject to the COA.



Biological Description

Description	C16 Ceramide (Palmitoyl Ceramide) is a naturally occurring small molecule that activates p53 by directly and selectively binding to it.
Targets(IC50)	Apoptosis,Endogenous Metabolite,p53,MDM-2/p53

Solubility Information

Solubility	Ethanol: 3.33 mg/mL (6.19 mM),Sonication and heating is recommended. DMF: 0.50 mg/mL (0.93 mM),Sonication is recommended. DMSO: < 1 mg/mL (insoluble or slightly soluble) (< 1 mg/ml refers to the product slightly soluble or insoluble)
------------	--

Preparing Stock Solutions

	1mg	5mg	10mg
1 mM	1.8591 mL	9.2954 mL	18.5908 mL
5 mM	0.3718 mL	1.8591 mL	3.7182 mL
10 mM	0.1859 mL	0.9295 mL	1.8591 mL
50 mM	0.0372 mL	0.1859 mL	0.3718 mL

Please select the appropriate solvent to prepare the stock solution, according to the solubility of the product in different solvents. Please use it as soon as possible.

Note: The dilution table applies only to solid products. For liquid products, please calculate the stock solution based on the stated concentration and/or density.

Reference

Ogretmen, B., Pettus, B.J., Rossi, M.J., et al. Biochemical mechanisms of the generation of endogenous long chain ceramide in response to exogenous short chain ceramide in the A547 human lung adenocarcinoma cell line. *J. Biol. Chem.* 277(15), 12960-12969 (2002).

White-Gilbertson, S., Mullen, T., Senkal, C., et al. Ceramide synthase 6 modulates TRAIL sensitivity and nuclear translocation of active caspase 3 in colon cancer cells. *Oncogene* 28(8), 1132-1141 (2009).

Seumois, G., Fillet, M., Gillet, L., et al. De novo C16- and C24-ceramide generation contributes to spontaneous neutrophil apoptosis. *J. Leukoc. Biol.* 81(6), 1477-1486 (2007).

Inhibitor · Natural Compounds · Compound Libraries · Recombinant Proteins

This product is for Research Use Only · Not for Human or Veterinary or Therapeutic Use

Tel:781-999-4286 E_mail:info@targetmol.com Address:34 Washington Street,Wellesley Hills,MA 02481