

6,7-dihydroxy-7-methyl-3-[(1E)-prop-1-en-1-yl]-5,6,7,8-tetrahydro-1H-isochromen-8-one

Chemical Properties

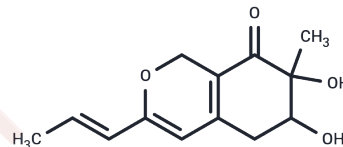
CAS No. :

Formula: C₁₃H₁₆O₄

Molecular Weight: 236.27

Storage: Powder: -20°C for 3 years | In solvent: -80°C for 1 year

Actual storage temperature shall be subject to the COA.



Biological Description

Description	6,7-dihydroxy-7-methyl-3-[(1E)-prop-1-en-1-yl]-5,6,7,8-tetrahydro-1H-isochromen-8-one is a high-purity biochemical reagent suitable for biochemical experiments and drug synthesis research.
-------------	--

Preparing Stock Solutions

	1mg	5mg	10mg
1 mM	4.2324 mL	21.1622 mL	42.3245 mL
5 mM	0.8465 mL	4.2324 mL	8.4649 mL
10 mM	0.4232 mL	2.1162 mL	4.2324 mL
50 mM	0.0846 mL	0.4232 mL	0.8465 mL

Please select the appropriate solvent to prepare the stock solution, according to the solubility of the product in different solvents. Please use it as soon as possible.

Note: The dilution table applies only to solid products. For liquid products, please calculate the stock solution based on the stated concentration and/or density.

Inhibitor · Natural Compounds · Compound Libraries · Recombinant Proteins

This product is for Research Use Only · Not for Human or Veterinary or Therapeutic Use

Tel:781-999-4286 E_mail:info@targetmol.com Address:34 Washington Street,Wellesley Hills,MA 02481