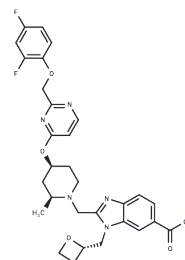


CT-996

## Chemical Properties

CAS No. : 2810808-95-6  
 Formula: C<sub>30</sub>H<sub>31</sub>F<sub>2</sub>N<sub>5</sub>O<sub>5</sub>  
 Molecular Weight: 579.59  
 Storage: Powder: -20°C for 3 years | In solvent: -80°C for 1 year  
 Actual storage temperature shall be subject to the COA.



## Biological Description

Description	CT-996 is an orally active GLP-1 receptor agonist that exhibits preferential cAMP signaling and reduces endocytosis. Oral administration of CT-996 improves glycemic control and reduces body weight and body fat.
Targets(IC50)	Glucagon Receptor, Arrestin
In vitro	In vitro experiments show that CT-996 has the same effect in stimulating the accumulation of cAMP in cells expressing human or macaque GLP-1R, and can stimulate the insulin secretion of human $\beta$ cell line. Compared with natural GLP-1, CT-996 has little effect on the recruitment of $\beta$ - arrestin, and the internalization of GLP-1R is weak.
In vivo	In vivo, a single oral administration of CT-996 can effectively inhibit the postprandial blood glucose level of mice expressing human GLP-1 receptor after mixed meal tolerance test (MMTT), and enhance glucose-stimulated insulin secretion (GSIS) in obese monkeys. In a 4-week study on obese monkeys, daily administration of CT-996 significantly inhibited the fluctuation of plasma glucose and insulin during MMTT. Compared with the control group, CT-996 significantly reduced food intake, body weight and fat mass. All doses were well tolerated.

## Solubility Information

Solubility	DMSO: 100.00 mg/mL (172.54 mM) ( $< 1$ mg/ml refers to the product slightly soluble or insoluble)
------------	--

### Preparing Stock Solutions

---

	1mg	5mg	10mg
1 mM	1.7254 mL	8.6268 mL	17.2536 mL
5 mM	0.3451 mL	1.7254 mL	3.4507 mL
10 mM	0.1725 mL	0.8627 mL	1.7254 mL
50 mM	0.0345 mL	0.1725 mL	0.3451 mL

---

Please select the appropriate solvent to prepare the stock solution, according to the solubility of the product in different solvents. Please use it as soon as possible.

Note: The dilution table applies only to solid products. For liquid products, please calculate the stock solution based on the stated concentration and/or density.

### Reference

Drucker DJ. GLP-1-based therapies for diabetes, obesity and beyond. Nat Rev Drug Discov. 2025 Aug;24(8):631-650.

JIAN LUO, et al. Efficacy of CT-996, an Oral Small Molecule GLP-1 Receptor Agonist, in Human GLP-1 Receptor Knockin Mice and Obese Cynomolgus Monkeys. Diabetes 14 June 2024; 73 (Supplement\_1): 771-P.

**Inhibitor · Natural Compounds · Compound Libraries · Recombinant Proteins**

This product is for Research Use Only · Not for Human or Veterinary or Therapeutic Use

Tel:781-999-4286 E\_mail:info@targetmol.com Address:34 Washington Street,Wellesley Hills,MA 02481