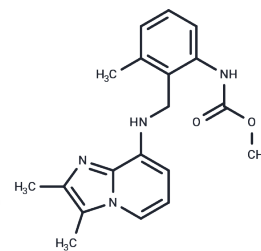


Pumaprazole

Chemical Properties

CAS No. :	158364-59-1
Formula:	C ₁₉ H ₂₂ N ₄ O ₂
Molecular Weight:	338.4
Storage:	Powder: -20°C for 3 years In solvent: -80°C for 1 year Actual storage temperature shall be subject to the COA.



Biological Description

Description	Pumaprazole (BY-841) is an antagonist of a reversible proton pump.
Targets(IC50)	Proton pump
In vivo	Pumaprazole shows identical ID50 values on day 1 (11 µmol/kg, 95% confidence limits of 5 and 23), and on day 7 (10 µmol/kg, 95% confidence limits of 4 and 23) of a repeated dose study in this model. Basal acid secretion in the Ghosh-Schild rat is inhibited by Pumaprazole with a higher efficacy compared to ranitidine. The lower dose of Pumaprazole (27 µmol/kg) rapidly elevates luminal pH up to almost neutrality, the higher dose (54 µmol/kg) further prolongs this pH-elevating effect[1].

Solubility Information

Solubility	DMSO: 55 mg/mL (162.53 mM),Sonication is recommended. (< 1 mg/ml refers to the product slightly soluble or insoluble)
In vivo Formulation	10% DMSO+40% PEG300+5% Tween 80+45% Saline: 2 mg/mL (5.91 mM),Sonication is recommended. <i>Please add the solvents sequentially, clarifying the solution as much as possible before adding the next one. Dissolve by heating and/or sonication if necessary. Working solution is recommended to be prepared and used immediately. The formulation provided above is for reference purposes only. In vivo formulations may vary and should be modified based on specific experimental conditions.</i>

Preparing Stock Solutions

	1mg	5mg	10mg
1 mM	2.9551 mL	14.7754 mL	29.5508 mL
5 mM	0.591 mL	2.9551 mL	5.9102 mL
10 mM	0.2955 mL	1.4775 mL	2.9551 mL
50 mM	0.0591 mL	0.2955 mL	0.591 mL

Please select the appropriate solvent to prepare the stock solution, according to the solubility of the product in different solvents. Please use it as soon as possible.

Note: The dilution table applies only to solid products. For liquid products, please calculate the stock solution based on the stated concentration and/or density.

Reference

Kromer W, et al. Animal pharmacology of reversible antagonism of the gastric acid pump, compared to standard antisecretory principles. *Pharmacology*. 2000 May;60(4):179-87.

Inhibitor · Natural Compounds · Compound Libraries · Recombinant Proteins

This product is for Research Use Only · Not for Human or Veterinary or Therapeutic Use

Tel:781-999-4286 E_mail:info@targetmol.com Address:34 Washington Street,Wellesley Hills,MA 02481