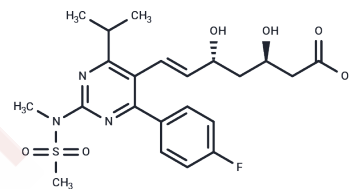


## (3R,5R)-Rosuvastatin

## Chemical Properties

CAS No. :	1094100-06-7
Formula:	C <sub>22</sub> H <sub>28</sub> FN <sub>3</sub> O <sub>6</sub> S
Molecular Weight:	481.54
Storage:	Powder: -20°C for 3 years   In solvent: -80°C for 1 year Actual storage temperature shall be subject to the COA.



## Biological Description

Description	(3R,5R)-Rosuvastatin, the (3R,5R)-enantiomer of Rosuvastatin, is a competitive HMG-CoA reductase inhibitor with an IC <sub>50</sub> of 11 nM.
Targets(IC <sub>50</sub> )	Others,HMG-CoA Reductase,Autophagy,Potassium Channel
In vitro	Rosuvastatin potently blocks hERG current (IC <sub>50</sub> : 195 nM) [2]. Rosuvastatin reduces the expression of the mature hERG and the interaction of Hsp70 with the hERG protein. Rosuvastatin is very effective in lowering triglycerides, LDL cholesterol, and C-reactive protein levels [3].

## Preparing Stock Solutions

	1mg	5mg	10mg
1 mM	2.0767 mL	10.3834 mL	20.7667 mL
5 mM	0.4153 mL	2.0767 mL	4.1533 mL
10 mM	0.2077 mL	1.0383 mL	2.0767 mL
50 mM	0.0415 mL	0.2077 mL	0.4153 mL

Please select the appropriate solvent to prepare the stock solution, according to the solubility of the product in different solvents. Please use it as soon as possible.

Note: The dilution table applies only to solid products. For liquid products, please calculate the stock solution based on the stated concentration and/or density.

Reference

Watanabe, M., et al., Synthesis and biological activity of methanesulfonamide pyrimidine- and N-methanesulfonyl pyrrole-substituted 3,5-dihydroxy-6-heptenoates, a novel series of HMG-CoA reductase inhibitors. *Bioorg Med Chem*, 1997. 5(2): p. 437-44.

Plante I, et al. Rosuvastatin blocks hERG current and prolongs cardiac repolarization. *J Pharm Sci*. 2012 Feb;101(2): 868-78.

Feng PF, et al. Intracellular Mechanism of Rosuvastatin-Induced Decrease in Mature hERG Protein Expression on Membrane. *Mol Pharm*. 2019 Apr 1;16(4):1477-1488.

**Inhibitor · Natural Compounds · Compound Libraries · Recombinant Proteins**

This product is for Research Use Only · Not for Human or Veterinary or Therapeutic Use

Tel:781-999-4286 E\_mail:info@targetmol.com Address:34 Washington Street,Wellesley Hills,MA 02481