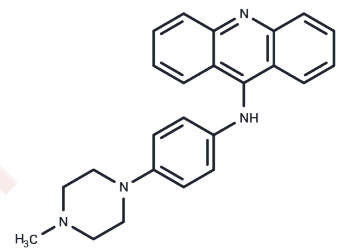


JP1302

Chemical Properties

CAS No. : 80259-18-3
 Formula: C₂₄H₂₄N₄
 Molecular Weight: 368.47
 Storage: Powder: -20°C for 3 years | In solvent: -80°C for 1 year
 Actual storage temperature shall be subject to the COA.



Biological Description

Description	JP1302 is a selective α_2C adrenoceptor antagonist with a K_b value of 16 nM and a K_i of 28 nM for human α_2C receptors. JP1302 has antidepressant activity, disrupts the FACT complex and degrades histone H1. JP1302 has been used in the study of neuropsychiatric disorders, acute renal failure, and renal injury.
Targets(IC50)	Adrenergic Receptor
In vitro	JP1302 exhibits approximately a 100-fold greater affinity compared to α_2A or α_2B . [1]
In vivo	JP1302 (5 μ mol/kg; once; Sprague-Dawley rats) is capable of complete reversal of the impairment in PPI induced in Sprague-Dawley rats by the psychotomimetic NMDA receptor antagonist, phencyclidine, and similar results are found in Wistar rats. [1] JP1302 (1-10 μ mol/kg) decreases immobility time in the FST to a level similar to that seen with 10-30 μ mol/kg of the antidepressant Desipramine. [1] JP1302 (3 mg/kg; IV, pre-treatment: administered 5 min before the induction of ischemia, post-treatment: injected 45 min after the initiation of reperfusion; once; Male Sprague Dawley rats) significantly ameliorated renal dysfunction in the rats at 24 h after reperfusion. post-ischemic administration of JP-1302 significantly ameliorated renal dysfunction, and histological damage and reduced apoptotic cells and pro-inflammatory cytokine mRNA expression. [3]

Solubility Information

Solubility	DMSO: 36.85 mg/mL (100.01 mM), Sonication is recommended. H ₂ O: insoluble (< 1 mg/ml refers to the product slightly soluble or insoluble)
------------	---

Preparing Stock Solutions

	1mg	5mg	10mg
1 mM	2.7139 mL	13.5696 mL	27.1393 mL
5 mM	0.5428 mL	2.7139 mL	5.4279 mL
10 mM	0.2714 mL	1.357 mL	2.7139 mL
50 mM	0.0543 mL	0.2714 mL	0.5428 mL

Please select the appropriate solvent to prepare the stock solution, according to the solubility of the product in different solvents. Please use it as soon as possible.

Note: The dilution table applies only to solid products. For liquid products, please calculate the stock solution based on the stated concentration and/or density.

Inhibitor · Natural Compounds · Compound Libraries · Recombinant Proteins

This product is for Research Use Only · Not for Human or Veterinary or Therapeutic Use

Tel:781-999-4286 E_mail:info@targetmol.com Address:34 Washington Street,Wellesley Hills,MA 02481