

C2 Ceramide (d14:1/2:0)

Chemical Properties

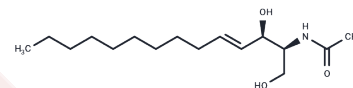
CAS No. : 2097561-20-9

Formula: C₁₆H₃₁NO₃

Molecular Weight: 285.42

Storage: Powder: -20°C for 3 years | In solvent: -80°C for 1 year

Actual storage temperature shall be subject to the COA.



Biological Description

Description	C2 Ceramide (d14:1/2:0) is a bioactive sphingolipid that, when administered dietarily at 100 µM, induces lipotoxic cardiomyopathy by increasing diastolic and systolic diameter, reducing fractional shortening, and decreasing the number of normal cardiac contractile events in Drosophila.
Targets(IC50)	Others,COX

Solubility Information

Solubility	DMSO: Soluble Ethanol: Soluble Chloroform: Soluble DMF: 5 mg/mL (17.52 mM),Sonication is recommended. (< 1 mg/ml refers to the product slightly soluble or insoluble)
------------	---

Preparing Stock Solutions

	1mg	5mg	10mg
1 mM	3.5036 mL	17.518 mL	35.0361 mL
5 mM	0.7007 mL	3.5036 mL	7.0072 mL
10 mM	0.3504 mL	1.7518 mL	3.5036 mL
50 mM	0.0701 mL	0.3504 mL	0.7007 mL

Please select the appropriate solvent to prepare the stock solution, according to the solubility of the product in different solvents. Please use it as soon as possible.

Note: The dilution table applies only to solid products. For liquid products, please calculate the stock solution based on the stated concentration and/or density.

Inhibitor · Natural Compounds · Compound Libraries · Recombinant Proteins

This product is for Research Use Only · Not for Human or Veterinary or Therapeutic Use

Tel:781-999-4286 E_mail:info@targetmol.com Address:34 Washington Street,Wellesley Hills,MA 02481