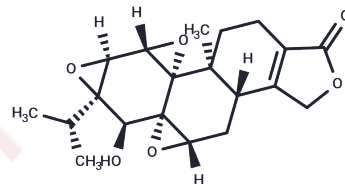


**(±)-14-Epitriptolide****Chemical Properties**

CAS No. :	73543-06-3
Formula:	C <sub>20</sub> H <sub>24</sub> O <sub>6</sub>
Molecular Weight:	360.4
Storage:	Powder: -20°C for 3 years   In solvent: -80°C for 1 year Actual storage temperature shall be subject to the COA.

**Biological Description**

Description	(±)-14-Epitriptolide is a biologically active compound that can be utilized for life science research applications.
Targets(IC50)	Others

**Preparing Stock Solutions**

	1mg	5mg	10mg
1 mM	2.7747 mL	13.8735 mL	27.7469 mL
5 mM	0.5549 mL	2.7747 mL	5.5494 mL
10 mM	0.2775 mL	1.3873 mL	2.7747 mL
50 mM	0.0555 mL	0.2775 mL	0.5549 mL

Please select the appropriate solvent to prepare the stock solution, according to the solubility of the product in different solvents. Please use it as soon as possible.

Note: The dilution table applies only to solid products. For liquid products, please calculate the stock solution based on the stated concentration and/or density.

**Inhibitor · Natural Compounds · Compound Libraries · Recombinant Proteins**

This product is for Research Use Only · Not for Human or Veterinary or Therapeutic Use

Tel:781-999-4286 E\_mail:info@targetmol.com Address:34 Washington Street,Wellesley Hills,MA 02481