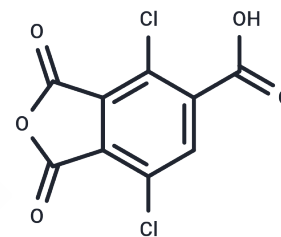


3,6-Dichlorotrimellitic anhydride

Chemical Properties

CAS No. :	81742-10-1
Formula:	C ₉ H ₂ Cl ₂ O ₅
Molecular Weight:	261.02
Storage:	Keep away from direct sunlight Powder: -20°C for 3 years In solvent: -80°C for 1 year <small>Actual storage temperature shall be subject to the COA.</small>



Biological Description

Description	3,6-Dichlorotrimellitic anhydride serves as the essential precursor in the synthesis of various dichlorinated fluoresceins and rhodamines.
Targets(IC50)	Others, Autophagy
Cell Research	<p>Instructions</p> <p>I. Solution preparation</p> <ol style="list-style-type: none"> 1. Stock solution: Dissolve 3,6-Dichlorotrimellitic anhydride in an appropriate solvent, such as anhydrous DMSO or DMF, to prepare a stock solution with a concentration of 1-10 mM. 2. Working solution: Dilute to an appropriate working concentration, usually 1-10 μM, using an experimental buffer (such as PBS, pH 7.4) according to experimental requirements. <p>II. Experimental steps</p> <ol style="list-style-type: none"> 1. Synthesis of chlorinated fluorescein or rhodamine derivatives <ol style="list-style-type: none"> 1) React 3,6-Dichlorotrimellitic anhydride with an appropriate aminofluorescein or rhodamine molecule, usually in an anhydrous solvent. 2) Reaction conditions: The reaction is usually carried out at 50-70°C for 2-6 hours. 3) After the reaction, purify using an appropriate solvent (such as methanol or water) to remove unreacted raw materials and by-products. 2. Labeling oligonucleotides or DNA <ol style="list-style-type: none"> 1) Label the target oligonucleotide or DNA with synthetic dichlorofluorescein or rhodamine derivatives. 2) Labeling is usually performed by covalent bonding, using chlorofluorescein or rhodamine to react with the amino or carbamate groups of nucleic acids. 3) Reaction time: Incubate at 4°C for 1-2 hours. After the reaction is completed, purify the labeled DNA or oligonucleotide using gel electrophoresis or liquid chromatography (HPLC). 3. Calibration and control <ol style="list-style-type: none"> 1) Control group: Use unreacted fluorescent dye or labeled DNA as a control to ensure the specificity of the labeling reaction. 2) Standard curve: Use a known concentration of labeled DNA sample to establish a standard curve between the fluorescence signal and the concentration. <p>Notes</p>

A DRUG SCREENING EXPERT

Cell Research	<p>1) Photosensitivity: Synthetic chlorofluorescein and rhodamine derivatives are usually highly photosensitized. Avoid strong light exposure during the experiment to prevent the fluorescence signal from attenuating.</p> <p>2) Storage conditions: 3,6-Dichlorotrimellitic anhydride and synthetic fluorescent markers should be stored at -20°C, away from light.</p> <p>3) Solubility: 3,6-Dichlorotrimellitic anhydride may release chlorine gas when dissolved, and the experiment should be performed in a well-ventilated area. "</p> <p>The above information is based on published literature. Experimental procedures should be appropriately modified to meet specific research demands.</p>
---------------	--

Solubility Information

Solubility	DMSO: 55 mg/mL (210.71 mM), Sonication is recommended. (< 1 mg/ml refers to the product slightly soluble or insoluble)
------------	---

Preparing Stock Solutions

	1mg	5mg	10mg
1 mM	3.8311 mL	19.1556 mL	38.3112 mL
5 mM	0.7662 mL	3.8311 mL	7.6622 mL
10 mM	0.3831 mL	1.9156 mL	3.8311 mL
50 mM	0.0766 mL	0.3831 mL	0.7662 mL

Please select the appropriate solvent to prepare the stock solution, according to the solubility of the product in different solvents. Please use it as soon as possible.

Note: The dilution table applies only to solid products. For liquid products, please calculate the stock solution based on the stated concentration and/or density.

Reference

Harlan JE, et al. Calibration of size-exclusion chromatography: use of a double Gaussian distribution function to describe pore sizes. Anal Biochem. 1995 Jan 20;224(2):557-63.

Inhibitor · Natural Compounds · Compound Libraries · Recombinant Proteins

This product is for Research Use Only · Not for Human or Veterinary or Therapeutic Use

Tel: 781-999-4286 E_mail: info@targetmol.com Address: 34 Washington Street, Wellesley Hills, MA 02481