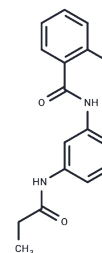


ML161 analog 1

Chemical Properties

CAS No. :	423740-83-4
Formula:	C ₁₆ H ₁₅ BrN ₂ O ₂
Molecular Weight:	347.21
Storage:	Powder: -20°C for 3 years In solvent: -80°C for 1 year Actual storage temperature shall be subject to the COA.



Biological Description

Description	ML161 analog 1 (compound 38) is a selective PAR1 allosteric inhibitor with an IC ₅₀ of 1.68 μM. ML161 analog 1 is an analog of ML161.
Targets(IC50)	Others

Preparing Stock Solutions

	1mg	5mg	10mg
1 mM	2.8801 mL	14.4005 mL	28.801 mL
5 mM	0.576 mL	2.8801 mL	5.7602 mL
10 mM	0.288 mL	1.4401 mL	2.8801 mL
50 mM	0.0576 mL	0.288 mL	0.576 mL

Please select the appropriate solvent to prepare the stock solution, according to the solubility of the product in different solvents. Please use it as soon as possible.

Note: The dilution table applies only to solid products. For liquid products, please calculate the stock solution based on the stated concentration and/or density.

Reference

Dockendorff C, et al. Discovery of 1,3-Diaminobenzenes as Selective Inhibitors of Platelet Activation at the PAR1 Receptor. ACS Med Chem Lett. 2012;3(3):232-237.

Inhibitor · Natural Compounds · Compound Libraries · Recombinant Proteins

This product is for Research Use Only · Not for Human or Veterinary or Therapeutic Use

Tel:781-999-4286 E_mail:info@targetmol.com Address:34 Washington Street,Wellesley Hills,MA 02481