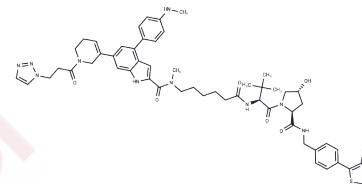


## KT621 Analog 2

## Chemical Properties

CAS No. :	3077464-25-3
Formula:	C55H67N11O6S
Molecular Weight:	1010.26
Storage:	Powder: -20°C for 3 years   In solvent: -80°C for 1 year Actual storage temperature shall be subject to the COA.



## Biological Description

Description	KT621 Analog 2 also measured the DC50 value of STAT6 to be > 1 $\mu$ M through the Meso Scale Discovery Assay (MSDA) method. This detection was derived after culturing the human cell line A549 at 37°C for 24 hours.
Targets(IC50)	STAT

## Preparing Stock Solutions

	1mg	5mg	10mg
1 mM	0.9898 mL	4.9492 mL	9.8984 mL
5 mM	0.198 mL	0.9898 mL	1.9797 mL
10 mM	0.099 mL	0.4949 mL	0.9898 mL
50 mM	0.0198 mL	0.099 mL	0.198 mL

Please select the appropriate solvent to prepare the stock solution, according to the solubility of the product in different solvents. Please use it as soon as possible.

Note: The dilution table applies only to solid products. For liquid products, please calculate the stock solution based on the stated concentration and/or density.

## Reference

Yang, Bin at al. Stat6 degraders and uses thereof. WO2025049820 A1

Inhibitor · Natural Compounds · Compound Libraries · Recombinant Proteins

This product is for Research Use Only · Not for Human or Veterinary or Therapeutic Use

Tel: 781-999-4286 E\_mail: info@targetmol.com Address: 34 Washington Street, Wellesley Hills, MA 02481