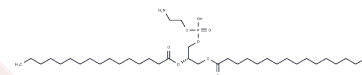


(S)-1,2-dipalmitoyl-sn-glycero-3-phosphoethanolamine

Chemical Properties

CAS No. : 71357-99-8
 Formula: C37H74NO8P
 Molecular Weight: 691.96
 Storage: Powder: -20°C for 3 years | In solvent: -80°C for 1 year
Actual storage temperature shall be subject to the COA.



Biological Description

Description	(S)-1,2-Dipalmitoyl-sn-glycero-3-phosphoethanolamine (DPPE) is a phosphatidylethanolamine lipid composed of two palmitoyl chains. As a chiral isomer, (S)-1,2-Dipalmitoyl-sn-glycero-3-phosphoethanolamine (DPPE) exhibits amphiphilic properties under physiological conditions and is commonly used to construct liposomes and model biological membrane systems. Its high phase transition temperature enables it to enhance the order and stability of membrane structures, making it highly valuable in membrane fusion research and drug delivery systems.
Targets(IC50)	Others

Preparing Stock Solutions

	1mg	5mg	10mg
1 mM	1.4452 mL	7.2259 mL	14.4517 mL
5 mM	0.289 mL	1.4452 mL	2.8903 mL
10 mM	0.1445 mL	0.7226 mL	1.4452 mL
50 mM	0.0289 mL	0.1445 mL	0.289 mL

Please select the appropriate solvent to prepare the stock solution, according to the solubility of the product in different solvents. Please use it as soon as possible.

Note: The dilution table applies only to solid products. For liquid products, please calculate the stock solution based on the stated concentration and/or density.

Reference

Rahman MA, et al. Stability and sensitivity enhanced electrochemical in vivo superoxide microbiosensor based on covalently co-immobilized lipid and cytochrome c. Anal Chem. 2012 Aug 7;84(15):6654-60.

Inhibitor · Natural Compounds · Compound Libraries · Recombinant Proteins

This product is for Research Use Only · Not for Human or Veterinary or Therapeutic Use

Tel:781-999-4286 E_mail:info@targetmol.com Address:34 Washington Street,Wellesley Hills,MA 02481