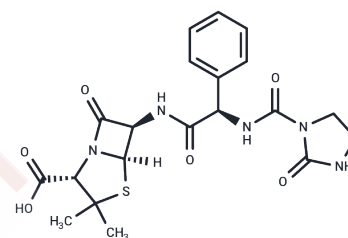


## Azlocillin

## Chemical Properties

CAS No. :	37091-66-0
Formula:	C <sub>20</sub> H <sub>23</sub> N <sub>5</sub> O <sub>6</sub> S
Molecular Weight:	461.49
Storage:	Powder: -20°C for 3 years   In solvent: -80°C for 1 year Actual storage temperature shall be subject to the COA.



## Biological Description

Description	Azlocillin is a semisynthetic ampicillin-derived penicillin belonging to acylureido.
Targets(IC50)	Others,Antibacterial,Antibiotic,Parasite

## Solubility Information

Solubility	DMSO: Soluble, (< 1 mg/ml refers to the product slightly soluble or insoluble)
------------	---

## Preparing Stock Solutions

	1mg	5mg	10mg
1 mM	2.1669 mL	10.8345 mL	21.6689 mL
5 mM	0.4334 mL	2.1669 mL	4.3338 mL
10 mM	0.2167 mL	1.0834 mL	2.1669 mL
50 mM	0.0433 mL	0.2167 mL	0.4334 mL

Please select the appropriate solvent to prepare the stock solution, according to the solubility of the product in different solvents. Please use it as soon as possible.

Note: The dilution table applies only to solid products. For liquid products, please calculate the stock solution based on the stated concentration and/or density.

## Reference

Alizadeh A, Salouti M, Alizadeh H, Kazemizadeh AR, Safari AA, Mahmazi S. Enhanced antibacterial effect of azlocillin in conjugation with silver nanoparticles against *Pseudomonas aeruginosa*. IET Nanobiotechnol. 2017 Dec;11(8):942-947. doi: 10.1049/iet-nbt.2017.0009. PubMed PMID: 29155393.

Ren J, Nettleship JE, Males A, Stuart DI, Owens RJ. Crystal structures of penicillin-binding protein 3 in complexes with azlocillin and cefoperazone in both acylated and deacylated forms. FEBS Lett. 2016 Jan;590(2):288-97. doi: 10.1002/1873-3468.12054. Epub 2016 Jan 23. PubMed PMID: 26823174; PubMed Central PMCID: PMC4764023.

**Inhibitor · Natural Compounds · Compound Libraries · Recombinant Proteins**

This product is for Research Use Only · Not for Human or Veterinary or Therapeutic Use

Tel:781-999-4286 E\_mail:info@targetmol.com Address:34 Washington Street,Wellesley Hills,MA 02481