

Renin inhibitory peptide

Chemical Properties

CAS No. : 75645-19-1

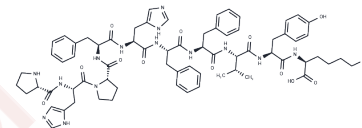
Formula: C₆₉H₈₇N₁₅O₁₂

Molecular Weight: 1318.52

Keep away from moisture

Storage: Powder: -20°C for 3 years | In solvent: -80°C for 1 year

Actual storage temperature shall be subject to the COA.



Biological Description

Description

Renin inhibitory peptide is an analog of angiotensinogen.

Preparing Stock Solutions

	1mg	5mg	10mg
1 mM	0.7584 mL	3.7921 mL	7.5843 mL
5 mM	0.1517 mL	0.7584 mL	1.5169 mL
10 mM	0.0758 mL	0.3792 mL	0.7584 mL
50 mM	0.0152 mL	0.0758 mL	0.1517 mL

Please select the appropriate solvent to prepare the stock solution, according to the solubility of the product in different solvents. Please use it as soon as possible.

Note: The dilution table applies only to solid products. For liquid products, please calculate the stock solution based on the stated concentration and/or density.

Reference

Fitzgerald C, Aluko RE, Hossain M, Rai DK, Hayes M. Potential of a renin inhibitory peptide from the red seaweed *Palmaria palmata* as a functional food ingredient following confirmation and characterization of a hypotensive effect in spontaneously hypertensive rats. *J Agric Food Chem*. 2014 Aug 20;62(33):8352-6. doi: 10.1021/jf500983n. Epub 2014 Aug 7. PubMed PMID: 25062358.

Fitzgerald C, Mora-Soler L, Gallagher E, O'Connor P, Prieto J, Soler-Vila A, Hayes M. Isolation and characterization of bioactive pro-peptides with in vitro renin inhibitory activities from the macroalga *Palmaria palmata*. *J Agric Food Chem*. 2012 Aug 1;60(30):7421-7. doi: 10.1021/jf301361c. Epub 2012 Jul 19. PubMed PMID: 22747312.

Thaisrivongs S, Pals DT, DuCharme DW, Turner SR, DeGraaf GL, Lawson JA, Couch SJ, Williams MV. Renin inhibitory peptides. Incorporation of polar, hydrophilic end groups into an active renin inhibitory peptide template and their evaluation in a human renin infused rat model and in conscious sodium-depleted monkeys. *J Med Chem*. 1991 Feb;34(2):633-42. PubMed PMID: 1995887.

Lafarga T, Rai DK, O'Connor P, Hayes M. A Bovine Fibrinogen-Enriched Fraction as a Source of Peptides with in Vitro Renin and Angiotensin-I-Converting Enzyme Inhibitory Activities. *J Agric Food Chem*. 2015 Oct 7;63(39):8676-84. doi: 10.1021/acs.jafc.5b03167. Epub 2015 Sep 28. PubMed PMID: 26373334.

Inhibitor · Natural Compounds · Compound Libraries · Recombinant Proteins

This product is for Research Use Only · Not for Human or Veterinary or Therapeutic Use

Tel:781-999-4286 E_mail:info@targetmol.com Address:34 Washington Street,Wellesley Hills,MA 02481