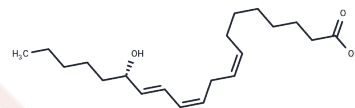


## 15(S)-HETrE

## Chemical Properties

CAS No. :	92693-02-2
Formula:	C <sub>20</sub> H <sub>34</sub> O <sub>3</sub>
Molecular Weight:	322.48
Storage:	Powder: -20°C for 3 years   In solvent: -80°C for 1 year Actual storage temperature shall be subject to the COA.



## Biological Description

Description	15(S)-HETrE is the hydroxy-trienoic acid resulting from 15-lipoxygenation of dihomo- $\gamma$ -linolenic acid. It inhibits 5-LO in human PMNL with an IC <sub>50</sub> value of 4.6 $\mu$ M. In RBL cells, 15(S)-HETrE also inhibits 5-LO, but is approximately 1/20 as potent as 15(S)-HpETE.
Targets(IC <sub>50</sub> )	Others,Lipoxygenase

## Solubility Information

Solubility	0.1 M Na <sub>2</sub> CO <sub>3</sub> : 2 mg/mL (6.2 mM),Sonication is recommended. Ethanol: Miscible DMF: Miscible PBS (pH 7.2): 0.8 mg/mL (2.48 mM),Sonication is recommended. DMSO: Miscible (< 1 mg/ml refers to the product slightly soluble or insoluble)
------------	--

## Preparing Stock Solutions

	1mg	5mg	10mg
1 mM	3.101 mL	15.5048 mL	31.0097 mL
5 mM	0.6202 mL	3.101 mL	6.2019 mL
10 mM	0.3101 mL	1.5505 mL	3.101 mL
50 mM	0.062 mL	0.3101 mL	0.6202 mL

Please select the appropriate solvent to prepare the stock solution, according to the solubility of the product in different solvents. Please use it as soon as possible.

Note: The dilution table applies only to solid products. For liquid products, please calculate the stock solution based on the stated concentration and/or density.

**Inhibitor · Natural Compounds · Compound Libraries · Recombinant Proteins**

This product is for Research Use Only · Not for Human or Veterinary or Therapeutic Use

Tel:781-999-4286 E\_mail:info@targetmol.com Address:34 Washington Street,Wellesley Hills,MA 02481