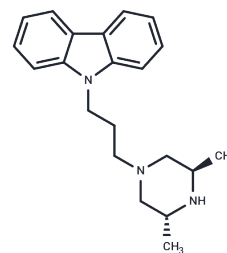


H27485

## Chemical Properties

CAS No. : 95586-99-5  
 Formula: C<sub>21</sub>H<sub>27</sub>N<sub>3</sub>  
 Molecular Weight: 321.46  
 Storage: Powder: -20°C for 3 years | In solvent: -80°C for 1 year  
 Actual storage temperature shall be subject to the COA.



## Biological Description

Description	H27485 is a high-affinity dopamine transporter (DAT) inhibitor (K <sub>i</sub> = 6.3 nM) that modulates neural signaling by blocking dopamine reuptake; it is commonly used in pharmacological studies of the dopaminergic system and related neurological disorders.
Targets(IC50)	Dopamine Receptor

## Preparing Stock Solutions

	1mg	5mg	10mg
1 mM	3.1108 mL	15.554 mL	31.1081 mL
5 mM	0.6222 mL	3.1108 mL	6.2216 mL
10 mM	0.3111 mL	1.5554 mL	3.1108 mL
50 mM	0.0622 mL	0.3111 mL	0.6222 mL

Please select the appropriate solvent to prepare the stock solution, according to the solubility of the product in different solvents. Please use it as soon as possible.

Note: The dilution table applies only to solid products. For liquid products, please calculate the stock solution based on the stated concentration and/or density.

## Reference

Repp L, Skoczen S L, Rasoulianboroujeni M, et al. Plasma stability and plasma metabolite concentration-time profiles of oligo (lactic acid) 8-paclitaxel prodrug loaded polymeric micelles[J]. The AAPS journal, 2023, 25(3): 39.

**Inhibitor · Natural Compounds · Compound Libraries · Recombinant Proteins**

This product is for Research Use Only · Not for Human or Veterinary or Therapeutic Use

Tel:781-999-4286 E\_mail:info@targetmol.com Address:34 Washington Street,Wellesley Hills,MA 02481