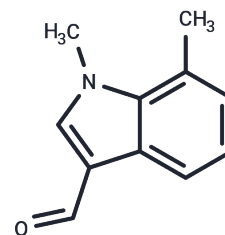


1,7-dimethyl-1H-indole-3-carbaldehyde

Chemical Properties

CAS No. :	164353-61-1
Formula:	C ₁₁ H ₁₁ NO
Molecular Weight:	173.21
Storage:	Powder: -20°C for 3 years In solvent: -80°C for 1 year Actual storage temperature shall be subject to the COA.



Biological Description

Description	1,7-dimethyl-1H-indole-3-carbaldehyde (ZINC14592128) is a marine derived natural products found in <i>Lyngbya majuscula</i> .
Targets(IC50)	Others

Solubility Information

Solubility	DMSO: 50 mg/mL (288.67 mM),Sonication is recommended. (< 1 mg/ml refers to the product slightly soluble or insoluble)
------------	--

Preparing Stock Solutions

	1mg	5mg	10mg
1 mM	5.7733 mL	28.8667 mL	57.7334 mL
5 mM	1.1547 mL	5.7733 mL	11.5467 mL
10 mM	0.5773 mL	2.8867 mL	5.7733 mL
50 mM	0.1155 mL	0.5773 mL	1.1547 mL

Please select the appropriate solvent to prepare the stock solution, according to the solubility of the product in different solvents. Please use it as soon as possible.

Note: The dilution table applies only to solid products. For liquid products, please calculate the stock solution based on the stated concentration and/or density.

Reference

Todd JS, Gerwick WH. Isolation of a cyclic carbonate, a gamma-butyrolactone, and a new indole derivative from the marine cyanobacterium *Lyngbya majuscula*. *J Nat Prod.* 1995 Apr;58(4):586-9.

Inhibitor · Natural Compounds · Compound Libraries · Recombinant Proteins

This product is for Research Use Only · Not for Human or Veterinary or Therapeutic Use

Tel:781-999-4286 E_mail:info@targetmol.com Address:34 Washington Street,Wellesley Hills,MA 02481