

BE2012

Chemical Properties

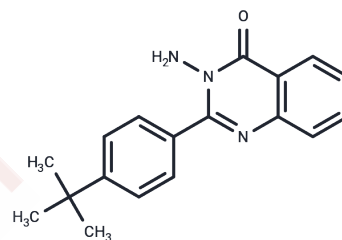
CAS No. : 667889-47-6

Formula: C₁₈H₁₉N₃O

Molecular Weight: 293.36

Storage: Powder: -20°C for 3 years | In solvent: -80°C for 1 year

Actual storage temperature shall be subject to the COA.



Biological Description

Description	BE2012 is an orally active metabolic regulator and potential anti-diabetic candidate. It effectively lowers blood glucose levels in pharmacological models of insulin resistance and type 2 diabetes by enhancing peripheral glucose uptake and significantly suppressing hepatic gluconeogenesis.
Targets(IC50)	REV-ERB
In vivo	BE2012 significantly promotes muscle fiber regeneration in acute injury mouse models by inducing Myf5 and Myod [1].

Preparing Stock Solutions

	1mg	5mg	10mg
1 mM	3.4088 mL	17.0439 mL	34.0878 mL
5 mM	0.6818 mL	3.4088 mL	6.8176 mL
10 mM	0.3409 mL	1.7044 mL	3.4088 mL
50 mM	0.0682 mL	0.3409 mL	0.6818 mL

Please select the appropriate solvent to prepare the stock solution, according to the solubility of the product in different solvents. Please use it as soon as possible.

Note: The dilution table applies only to solid products. For liquid products, please calculate the stock solution based on the stated concentration and/or density.

Reference

Bonhaus DW, et al. RS-102221: a novel high affinity and selective, 5-HT_{2C} receptor antagonist. *Neuropharmacology*. 1997 Apr-May;36(4-5):621-9.

Inhibitor · Natural Compounds · Compound Libraries · Recombinant Proteins

This product is for Research Use Only · Not for Human or Veterinary or Therapeutic Use

Tel:781-999-4286 E_mail:info@targetmol.com Address:34 Washington Street,Wellesley Hills,MA 02481