

## Ceramide C6-D7

## Chemical Properties

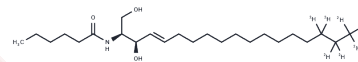
CAS No. : 2692624-22-7

Formula: C<sub>24</sub>H<sub>47</sub>N<sub>3</sub>O<sub>3</sub>

Molecular Weight: 404.68

Storage: Powder: -20°C for 3 years | In solvent: -80°C for 1 year

Actual storage temperature shall be subject to the COA.



## Biological Description

Description	Ceramide C6-D7 is the deuterated form of Ceramide C6. Ceramide C6 functions as an activator of the sphingolipid pathway and serves as an exogenous short-chain ceramide that can induce apoptosis in various cancer cells.
Targets(IC50)	Apoptosis

## Preparing Stock Solutions

	1mg	5mg	10mg
1 mM	2.4711 mL	12.3554 mL	24.7109 mL
5 mM	0.4942 mL	2.4711 mL	4.9422 mL
10 mM	0.2471 mL	1.2355 mL	2.4711 mL
50 mM	0.0494 mL	0.2471 mL	0.4942 mL

Please select the appropriate solvent to prepare the stock solution, according to the solubility of the product in different solvents. Please use it as soon as possible.

Note: The dilution table applies only to solid products. For liquid products, please calculate the stock solution based on the stated concentration and/or density.

Inhibitor · Natural Compounds · Compound Libraries · Recombinant Proteins

This product is for Research Use Only · Not for Human or Veterinary or Therapeutic Use

Tel: 781-999-4286

E\_mail: info@targetmol.com

Address: 34 Washington Street, Wellesley Hills, MA 02481