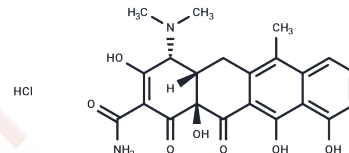


## 4-Epianhydrotetracycline hydrochloride

### Chemical Properties

CAS No. :	4465-65-0
Formula:	C <sub>22</sub> H <sub>23</sub> ClN <sub>2</sub> O <sub>7</sub>
Molecular Weight:	462.88
Storage:	Powder: -20°C for 3 years   In solvent: -80°C for 1 year Actual storage temperature shall be subject to the COA.



### Biological Description

Description	Epianhydrotetracycline (EATC) is a degradation product of the antibiotic tetracycline .1 EATC is active against Pseudomonas, Agrobacterium, Moraxella, Bacillus, and E. coli (MIC50s = 0.75-16 mg/L).
Targets(IC50)	Apoptosis,Others,Antibacterial,Antibiotic

### Solubility Information

Solubility	Ethanol: 2 mg/mL (4.32 mM),Sonication is recommended. DMF: 10 mg/mL (21.6 mM),Sonication is recommended. PBS (pH 7.2): 0.25 mg/mL (0.54 mM),Sonication is recommended. DMSO: 20 mg/mL (43.21 mM),Sonication is recommended. ( < 1 mg/ml refers to the product slightly soluble or insoluble)
------------	--

### Preparing Stock Solutions

	1mg	5mg	10mg
1 mM	2.1604 mL	10.8019 mL	21.6039 mL
5 mM	0.4321 mL	2.1604 mL	4.3208 mL
10 mM	0.216 mL	1.0802 mL	2.1604 mL
50 mM	0.0432 mL	0.216 mL	0.4321 mL

Please select the appropriate solvent to prepare the stock solution, according to the solubility of the product in different solvents. Please use it as soon as possible.

Note: The dilution table applies only to solid products. For liquid products, please calculate the stock solution based on the stated concentration and/or density.

### Reference

Halling-Sørensen, B., Sengeløv, G., and Tjørnelund, J. Toxicity of tetracyclines and tetracycline degradation products to environmentally relevant bacteria, including selected tetracycline-resistant bacteria. Arch. Environ. Contam. Toxicol. 42(3), 263-271 (2002).

**Inhibitor · Natural Compounds · Compound Libraries · Recombinant Proteins**

This product is for Research Use Only · Not for Human or Veterinary or Therapeutic Use

Tel:781-999-4286 E\_mail:info@targetmol.com Address:34 Washington Street,Wellesley Hills,MA 02481