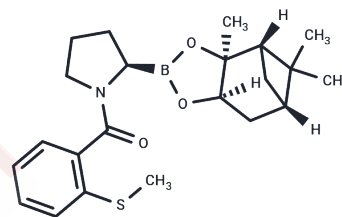


POP-IN-1

Chemical Properties

CAS No. : 2743432-99-5
 Formula: C₂₂H₃₀BNO₃S
 Molecular Weight: 399.35
 Storage: Powder: -20°C for 3 years | In solvent: -80°C for 1 year
 Actual storage temperature shall be subject to the COA.



Biological Description

Description	POP-IN-1 (Compound 12h) is an effective POP inhibitor (K _i =0.009 μM) with research potential in neurodegenerative diseases and cancer progression.
Targets(IC50)	Others,Prolyl Endopeptidase (PREP)

Preparing Stock Solutions

	1mg	5mg	10mg
1 mM	2.5041 mL	12.5203 mL	25.0407 mL
5 mM	0.5008 mL	2.5041 mL	5.0081 mL
10 mM	0.2504 mL	1.252 mL	2.5041 mL
50 mM	0.0501 mL	0.2504 mL	0.5008 mL

Please select the appropriate solvent to prepare the stock solution, according to the solubility of the product in different solvents. Please use it as soon as possible.

Note: The dilution table applies only to solid products. For liquid products, please calculate the stock solution based on the stated concentration and/or density.

Inhibitor · Natural Compounds · Compound Libraries · Recombinant Proteins

This product is for Research Use Only · Not for Human or Veterinary or Therapeutic Use

Tel:781-999-4286 E_mail:info@targetmol.com Address:34 Washington Street,Wellesley Hills,MA 02481