

PEP1 acetate

Chemical Properties

CAS No. :

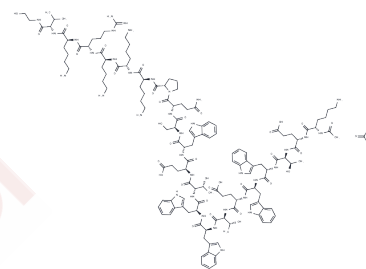
Formula: C142H206N36O35S

Molecular Weight: 3009.49

Keep away from moisture

Storage: Powder: -20°C for 3 years | In solvent: -80°C for 1 year

Actual storage temperature shall be subject to the COA.



Biological Description

Description	PEP1 acetate is a p21-mimetic peptide that serves as a specific proliferating cell nuclear antigen (PCNA) binding inhibitor. It arrests the cell cycle in the S phase by competitively blocking the interaction between PCNA and DNA polymerase delta, thereby interfering with DNA replication.
Targets(IC50)	Cell Cycle Arrest

Preparing Stock Solutions

	1mg	5mg	10mg
1 mM	0.3323 mL	1.6614 mL	3.3228 mL
5 mM	0.0665 mL	0.3323 mL	0.6646 mL
10 mM	0.0332 mL	0.1661 mL	0.3323 mL
50 mM	0.0066 mL	0.0332 mL	0.0665 mL

Please select the appropriate solvent to prepare the stock solution, according to the solubility of the product in different solvents. Please use it as soon as possible.

Note: The dilution table applies only to solid products. For liquid products, please calculate the stock solution based on the stated concentration and/or density.

Reference

Iwatani Y, et al. HIV-1 Vif-mediated ubiquitination/degradation of APOBEC3G involves four critical lysine residues in its C-terminal domain. Proc Natl Acad Sci U S A. 2009 Nov 17;106(46):19539-44.

Inhibitor · Natural Compounds · Compound Libraries · Recombinant Proteins

This product is for Research Use Only · Not for Human or Veterinary or Therapeutic Use

Tel:781-999-4286 E_mail:info@targetmol.com Address:34 Washington Street,Wellesley Hills,MA 02481