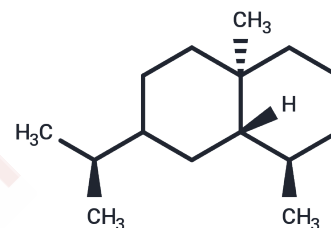


Eudesmane

Chemical Properties

CAS No. :	473-11-0
Formula:	C ₁₅ H ₂₈
Molecular Weight:	208.389
Storage:	Powder: -20°C for 3 years In solvent: -80°C for 1 year Actual storage temperature shall be subject to the COA.



Biological Description

Description	Eudesmane is a bicyclododecane terpenes.
-------------	--

Preparing Stock Solutions

	1mg	5mg	10mg
1 mM	4.7987 mL	23.9935 mL	47.9869 mL
5 mM	0.9597 mL	4.7987 mL	9.5974 mL
10 mM	0.4799 mL	2.3993 mL	4.7987 mL
50 mM	0.096 mL	0.4799 mL	0.9597 mL

Please select the appropriate solvent to prepare the stock solution, according to the solubility of the product in different solvents. Please use it as soon as possible.

Note: The dilution table applies only to solid products. For liquid products, please calculate the stock solution based on the stated concentration and/or density.

Reference

- Yang P, Zhu W, Xu J, Liu W, Dong Z, Kikuchi T, Yamada T, Xie N, Feng F, Zhang J. Sesquiterpenoids and triterpenoids from *Secamone lanceolata* blume with inhibitory effects on nitric oxide production. *Fitoterapia*. 2018 Nov 27;133:5-11. doi: 10.1016/j.fitote.2018.11.016. [Epub ahead of print] PubMed PMID: 30496812.
- Ma JH, Qi J, Liu FY, Lin SQ, Zhang CY, Xie WD, Zhang HY, Li X. Ivalin Inhibits Proliferation, Migration and Invasion by Suppressing Epithelial Mesenchymal Transition in Breast Cancer Cells. *Nutr Cancer*. 2018 Nov 21:1-9. doi: 10.1080/01635581.2018.1539185. [Epub ahead of print] PubMed PMID: 30463445.
- Wen Q, Liu YP, Yan G, Yang S, Hu S, Hua J, Yin WQ, Chen GY, Fu YH. Bioactive Eudesmane sesquiterpenes from *Artabotrys hongkongensis* Hance. *Nat Prod Res*. 2018 Nov 17:1-7. doi: 10.1080/14786419.2018.1527834. [Epub ahead of print] PubMed PMID: 30449168.
- Wu ZL, Wang Q, Wang JX, Dong HY, Xu XK, Shen YH, Li HL, Zhang WD. Vlasoulamine A, a Neuroprotective [3.2.2] Cyclazine Sesquiterpene Lactone Dimer from the Roots of *Vladimiria souliei*. *Org Lett*. 2018 Nov 13. doi: 10.1021/acs.orglett.8b03306. [Epub ahead of print] PubMed PMID: 30421929.

Inhibitor · Natural Compounds · Compound Libraries · Recombinant Proteins

This product is for Research Use Only · Not for Human or Veterinary or Therapeutic Use

Tel:781-999-4286 E_mail:info@targetmol.com Address:34 Washington Street,Wellesley Hills,MA 02481