

Gemlapodect

Chemical Properties

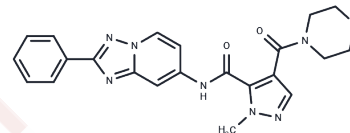
CAS No. : 1380329-87-2

Formula: C₂₂H₂₁N₇O₃

Molecular Weight: 431.45

Storage: Powder: -20°C for 3 years | In solvent: -80°C for 1 year

Actual storage temperature shall be subject to the COA.



Biological Description

Description	Gemlapodect (RO554965), a phosphodiesterase 10A (PDE10A) inhibitor, is utilized in schizophrenia research.
Targets(IC50)	Others,PDE

Preparing Stock Solutions

	1mg	5mg	10mg
1 mM	2.3178 mL	11.5888 mL	23.1777 mL
5 mM	0.4636 mL	2.3178 mL	4.6355 mL
10 mM	0.2318 mL	1.1589 mL	2.3178 mL
50 mM	0.0464 mL	0.2318 mL	0.4636 mL

Please select the appropriate solvent to prepare the stock solution, according to the solubility of the product in different solvents. Please use it as soon as possible.

Note: The dilution table applies only to solid products. For liquid products, please calculate the stock solution based on the stated concentration and/or density.

Inhibitor · Natural Compounds · Compound Libraries · Recombinant Proteins

This product is for Research Use Only · Not for Human or Veterinary or Therapeutic Use

Tel:781-999-4286

E_mail:info@targetmol.com

Address:34 Washington Street,Wellesley Hills,MA 02481