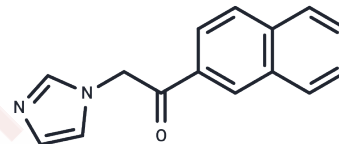


Nafimidone

Chemical Properties

CAS No. :	64212-22-2
Formula:	C ₁₅ H ₁₂ N ₂ O
Molecular Weight:	236.27
Storage:	Powder: -20°C for 3 years In solvent: -80°C for 1 year Actual storage temperature shall be subject to the COA.



Biological Description

Description	Nafimidone shows anticonvulsant activity in a rat model of amygdala epilepsy and can be used in the treatment of chronic intractable epilepsy.
Targets(IC50)	Others
In vivo	Nafimidone (600 mg/day; 12 patients), was added during 2 weeks in the hospital. Patients were then evaluated weekly for 8 weeks. Eight patients experienced 33-98% improvement in seizure control. Nafimidone had a marked inhibitory effect on the clearance of CBZ and PHT, resulting in higher plasma levels in nine patients.[3]

Solubility Information

Solubility	DMSO: 55 mg/mL (232.78 mM), Sonication is recommended. (< 1 mg/ml refers to the product slightly soluble or insoluble)
------------	---

Preparing Stock Solutions

	1mg	5mg	10mg
1 mM	4.2324 mL	21.1622 mL	42.3245 mL
5 mM	0.8465 mL	4.2324 mL	8.4649 mL
10 mM	0.4232 mL	2.1162 mL	4.2324 mL
50 mM	0.0846 mL	0.4232 mL	0.8465 mL

Please select the appropriate solvent to prepare the stock solution, according to the solubility of the product in different solvents. Please use it as soon as possible.

Note: The dilution table applies only to solid products. For liquid products, please calculate the stock solution based on the stated concentration and/or density.

Reference

Robertson DW, et al. Structure-activity relationships of (arylalkyl)imidazole anticonvulsants: comparison of the (fluorenylalkyl)imidazoles with nafimidone and denzimol. *J Med Chem.* 1986;29(9):1577-1586.

Walker KA, et al. 1-(Naphthylalkyl)-1H-imidazole derivatives, a new class of anticonvulsant agents. *J Med Chem.* 1981;24(1):67-74.

Treiman DM, et al. Efficacy of nafimidone in the treatment of intractable partial seizures: report of a two-center pilot study. *Epilepsia.* 1985;26(6):607-611.

Inhibitor · Natural Compounds · Compound Libraries · Recombinant Proteins

This product is for Research Use Only · Not for Human or Veterinary or Therapeutic Use

Tel:781-999-4286 E_mail:info@targetmol.com Address:34 Washington Street,Wellesley Hills,MA 02481