

CU-2010

Chemical Properties

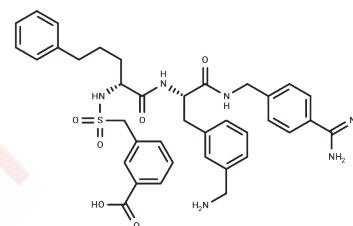
CAS No. : 1021707-76-5

Formula: C₃₇H₄₂N₆O₆S

Molecular Weight: 698.83

Storage: Powder: -20°C for 3 years | In solvent: -80°C for 1 year

Actual storage temperature shall be subject to the COA.



Biological Description

Description	CU-2010 is a synthetic serine protease inhibitor with antifibrinolytic and anticoagulant properties. CU-2010 dose-dependently reduces postoperative blood loss and improves postischemic recovery after cardiac surgery in a canine model.
Targets(IC50)	Others

Preparing Stock Solutions

	1mg	5mg	10mg
1 mM	1.431 mL	7.1548 mL	14.3096 mL
5 mM	0.2862 mL	1.431 mL	2.8619 mL
10 mM	0.1431 mL	0.7155 mL	1.431 mL
50 mM	0.0286 mL	0.1431 mL	0.2862 mL

Please select the appropriate solvent to prepare the stock solution, according to the solubility of the product in different solvents. Please use it as soon as possible.

Note: The dilution table applies only to solid products. For liquid products, please calculate the stock solution based on the stated concentration and/or density.

Inhibitor · Natural Compounds · Compound Libraries · Recombinant Proteins

This product is for Research Use Only · Not for Human or Veterinary or Therapeutic Use

Tel:781-999-4286 E_mail:info@targetmol.com Address:34 Washington Street,Wellesley Hills,MA 02481