

Potassium clavulanate cellulose

Chemical Properties

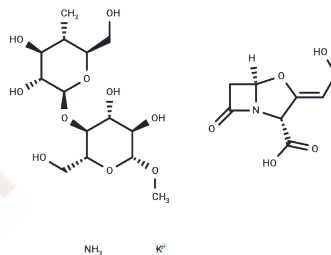
CAS No. :

Formula: C₈H₉NO₅K .(C₆H₁₀O₅)_n

Molecular Weight:

Storage: Powder: -20°C for 3 years | In solvent: -80°C for 1 year

Actual storage temperature shall be subject to the COA.



Biological Description

Description	Potassium clavulanate cellulose is a mixture of potassium clavulanate and cellulose, is an inhibitor of beta-lactamase.
Targets(IC50)	Others,Antibacterial,Antibiotic

Inhibitor · Natural Compounds · Compound Libraries · Recombinant Proteins

This product is for Research Use Only· Not for Human or Veterinary or Therapeutic Use

Tel:781-999-4286

E_mail:info@targetmol.com

Address:34 Washington Street,Wellesley Hills,MA 02481