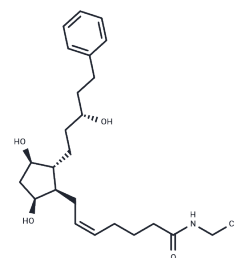


Latanoprost ethyl amide

Chemical Properties

CAS No. : 607351-44-0
 Formula: C₂₅H₃₉NO₄
 Molecular Weight: 417.58
 Storage: Powder: -20°C for 3 years | In solvent: -80°C for 1 year
 Actual storage temperature shall be subject to the COA.



Biological Description

Description	Latanoprost ethyl amide (Lat-NEt) is a latanoprost analog in which the C-1 carboxyl group has been modified to an N-ethyl amide. Prostaglandin esters exhibit ocular hypotensive activity, and prostaglandin N-ethyl amides have recently been introduced as alternative ocular hypotensive prodrugs. Although it has been claimed that prostaglandin ethyl amides are not converted to free acids in vivo, studies in our laboratories show that bovine and human corneal tissue can convert the N-ethyl amides of various prostaglandins to free acids at a rate of about 2.5 µg/g corneal tissue/hr. Lat-NEt is expected to exhibit the typical intraocular effects of latanoprost free acid, but with much slower hydrolysis pharmacokinetics characteristic of prostaglandin N-amides.
Targets(IC50)	Others,Prostaglandin Receptor

Solubility Information

Solubility	DMSO: 50 mg/mL (119.74 mM),Sonication is recommended. DMF: 30 mg/mL (71.84 mM),Sonication is recommended. Ethanol: 30 mg/mL (71.84 mM),Sonication is recommended. PBS (pH 7.2): 200 µg/mL,Sonication is recommended. (< 1 mg/ml refers to the product slightly soluble or insoluble)
------------	--

Preparing Stock Solutions

	1mg	5mg	10mg
1 mM	2.3948 mL	11.9738 mL	23.9475 mL
5 mM	0.479 mL	2.3948 mL	4.7895 mL
10 mM	0.2395 mL	1.1974 mL	2.3948 mL
50 mM	0.0479 mL	0.2395 mL	0.479 mL

Please select the appropriate solvent to prepare the stock solution, according to the solubility of the product in different solvents. Please use it as soon as possible.

Note: The dilution table applies only to solid products. For liquid products, please calculate the stock solution based on the stated concentration and/or density.

Inhibitor · Natural Compounds · Compound Libraries · Recombinant Proteins

This product is for Research Use Only · Not for Human or Veterinary or Therapeutic Use

Tel:781-999-4286 E_mail:info@targetmol.com Address:34 Washington Street,Wellesley Hills,MA 02481