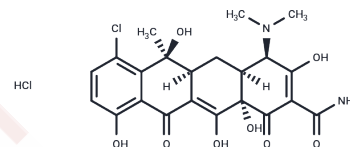


4-epi-Chlortetracycline (hydrochloride)

Chemical Properties

CAS No. :	101342-45-4
Formula:	C ₂₂ H ₂₄ Cl ₂ N ₂ O ₈
Molecular Weight:	515.34
Storage:	Powder: -20°C for 3 years In solvent: -80°C for 1 year Actual storage temperature shall be subject to the COA.



Biological Description

Description	Chlortetracycline is an analog of tetracycline, a broad spectrum antibiotic. In addition to its actions against microorganisms, chlortetracycline suppresses inflammation by inhibiting neutrophil action and other aspects of the innate immune response. 4-epi-Chlortetracycline is an epimer of chlortetracycline.
Targets(IC50)	Others, Antibiotic

Solubility Information

Solubility	DMSO: 20 mg/mL (38.81 mM), Sonication is recommended. PBS (pH 7.2): 0.25 mg/mL (0.49 mM), Sonication is recommended. DMF: 12 mg/mL (23.29 mM), Sonication is recommended. Ethanol: 2 mg/mL (3.88 mM), Sonication is recommended. (< 1 mg/ml refers to the product slightly soluble or insoluble)
------------	--

Preparing Stock Solutions

	1mg	5mg	10mg
1 mM	1.9405 mL	9.7023 mL	19.4047 mL
5 mM	0.3881 mL	1.9405 mL	3.8809 mL
10 mM	0.194 mL	0.9702 mL	1.9405 mL
50 mM	0.0388 mL	0.194 mL	0.3881 mL

Please select the appropriate solvent to prepare the stock solution, according to the solubility of the product in different solvents. Please use it as soon as possible.

Note: The dilution table applies only to solid products. For liquid products, please calculate the stock solution based on the stated concentration and/or density.

Inhibitor · Natural Compounds · Compound Libraries · Recombinant Proteins

This product is for Research Use Only · Not for Human or Veterinary or Therapeutic Use

Tel:781-999-4286 E_mail:info@targetmol.com Address:34 Washington Street,Wellesley Hills,MA 02481