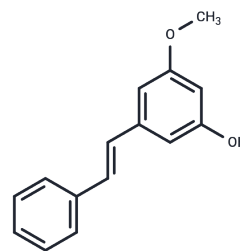


## Pinosylvin monomethyl ether

## Chemical Properties

CAS No. :	35302-70-6
Formula:	C <sub>15</sub> H <sub>14</sub> O <sub>2</sub>
Molecular Weight:	226.27
Storage:	Keep away from direct sunlight Powder: -20°C for 3 years   In solvent: -80°C for 1 year <small>Actual storage temperature shall be subject to the COA.</small>



## Biological Description

Description	Pinosylvin monomethyl ether is an aromatic compound demonstrating inhibitory activity against A2780, J774, and HEK293 cells.
Targets(IC50)	Others

## Solubility Information

Solubility	DMSO: 80.00 mg/mL (353.56 mM),Sonication is recommended. (< 1 mg/ml refers to the product slightly soluble or insoluble)
------------	---

## Preparing Stock Solutions

	1mg	5mg	10mg
1 mM	4.4195 mL	22.0975 mL	44.195 mL
5 mM	0.8839 mL	4.4195 mL	8.839 mL
10 mM	0.4419 mL	2.2097 mL	4.4195 mL
50 mM	0.0884 mL	0.4419 mL	0.8839 mL

Please select the appropriate solvent to prepare the stock solution, according to the solubility of the product in different solvents. Please use it as soon as possible.

Note: The dilution table applies only to solid products. For liquid products, please calculate the stock solution based on the stated concentration and/or density.

## Reference

Lindberg LE, Willför SM, Holmbom BR. Antibacterial effects of knotwood extractives on paper mill bacteria. J Ind Microbiol Biotechnol. 2004;31(3):137-147.

Schultz T P, et al. Structure-fungicidal properties of some 3- and 4-hydroxylated stilbenes and bibenzyl analogues [J]. Phytochemistry, 1992, 31(11):3801-3806.

**Inhibitor · Natural Compounds · Compound Libraries · Recombinant Proteins**

This product is for Research Use Only · Not for Human or Veterinary or Therapeutic Use

Tel:781-999-4286 E\_mail:info@targetmol.com Address:34 Washington Street,Wellesley Hills,MA 02481