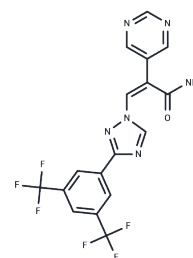


Eltanexor Z-isomer

Chemical Properties

CAS No. :	1642300-78-4
Formula:	C17H10F6N6O
Molecular Weight:	428.29
Storage:	Powder: -20°C for 3 years In solvent: -80°C for 1 year Actual storage temperature shall be subject to the COA.



Biological Description

Description	Eltanexor Z-isomer exhibits different inhibitory effects on Z138, MM15, 3T3 cell lines, with IC50s of 100 nM-50 μM, 100 nM, > 30 μM, respectively. Eltanexor Z-isomer is the less active isomer of KPT-8602. KPT-8602 is a potent CRM1 inhibitor.
Targets(IC50)	Others, CRM1

Solubility Information

Solubility	DMSO: 50 mg/mL (116.74 mM), Sonication is recommended. (< 1 mg/ml refers to the product slightly soluble or insoluble)
In vivo Formulation	10% DMSO+40% PEG300+5% Tween-80+45% Saline: 2.5 mg/mL (5.84 mM), Sonication is recommended. <i>Please add the solvents sequentially, clarifying the solution as much as possible before adding the next one. Dissolve by heating and/or sonication if necessary. Working solution is recommended to be prepared and used immediately. The formulation provided above is for reference purposes only. In vivo formulations may vary and should be modified based on specific experimental conditions.</i>

Preparing Stock Solutions

	1mg	5mg	10mg
1 mM	2.3349 mL	11.6743 mL	23.3487 mL
5 mM	0.467 mL	2.3349 mL	4.6697 mL
10 mM	0.2335 mL	1.1674 mL	2.3349 mL
50 mM	0.0467 mL	0.2335 mL	0.467 mL

Please select the appropriate solvent to prepare the stock solution, according to the solubility of the product in different solvents. Please use it as soon as possible.

Note: The dilution table applies only to solid products. For liquid products, please calculate the stock solution based on the stated concentration and/or density.

Reference

Vercruysse T et al. The second-generation exportin-1 inhibitor KPT-8602 demonstrates potent activity against acute lymphoblastic leukemia. Clin Cancer Res. 2016 Oct 25.

Hing ZA et al. Next-generation XPO1 inhibitor shows improved efficacy and in vivo tolerability in hematological malignancies. Leukemia. 2016 Jun 21.

Etchin J et al. KPT-8602, a second-generation inhibitor of XPO1-mediated nuclear export, is well tolerated and highly active against AML blasts and leukemia-initiating cells. Leukemia. 2016 Jun 24.

Inhibitor · Natural Compounds · Compound Libraries · Recombinant Proteins

This product is for Research Use Only · Not for Human or Veterinary or Therapeutic Use

Tel:781-999-4286 E_mail:info@targetmol.com Address:34 Washington Street,Wellesley Hills,MA 02481