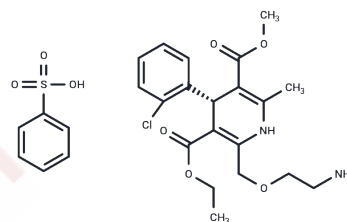


Amlodipine besylate, (R)-

Chemical Properties

CAS No. :	828247-64-9
Formula:	C ₂₆ H ₃₁ ClN ₂ O ₈ S
Molecular Weight:	567.05
Storage:	Powder: -20°C for 3 years In solvent: -80°C for 1 year Actual storage temperature shall be subject to the COA.



Biological Description

Description	Amlodipine besylate, (R)- is a medication used to lower blood pressure and prevent chest pain.
Targets(IC50)	Others

Preparing Stock Solutions

	1mg	5mg	10mg
1 mM	1.7635 mL	8.8176 mL	17.6351 mL
5 mM	0.3527 mL	1.7635 mL	3.527 mL
10 mM	0.1764 mL	0.8818 mL	1.7635 mL
50 mM	0.0353 mL	0.1764 mL	0.3527 mL

Please select the appropriate solvent to prepare the stock solution, according to the solubility of the product in different solvents. Please use it as soon as possible.

Note: The dilution table applies only to solid products. For liquid products, please calculate the stock solution based on the stated concentration and/or density.

Reference

- Gottwald-Hostalek U, Sun N, Barho C, Hildemann S. Management of Hypertension With a Fixed-Dose (Single-Pill) Combination of Bisoprolol and Amlodipine. Clin Pharmacol Drug Dev. 2017 Jan;6(1):9-18. doi: 10.1002/cpdd.309. Epub 2016 Oct 26. PubMed PMID: 27653022.
- van Zwieten PA. Amlodipine: an overview of its pharmacodynamic and pharmacokinetic properties. Clin Cardiol. 1994 Sep;17(9 Suppl 3):III3-6. Review. PubMed PMID: 9156957.

Inhibitor · Natural Compounds · Compound Libraries · Recombinant Proteins

This product is for Research Use Only. Not for Human or Veterinary or Therapeutic Use

Tel:781-999-4286 E_mail:info@targetmol.com Address:34 Washington Street,Wellesley Hills,MA 02481