

## Platelet Membrane Glycoprotein IIB Peptide (296-306)

## Chemical Properties

CAS No. :

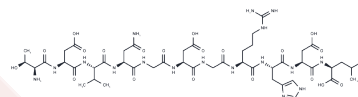
Formula: C47H75N17O20

Molecular Weight: 1198.2

Keep away from moisture

Storage: Powder: -20°C for 3 years | In solvent: -80°C for 1 year

Actual storage temperature shall be subject to the COA.



## Biological Description

Description	GP1Ib is composed of a 125 Kd heavy chain that is disulfide-linked to a 23 Kd light chain. Hydrophobicity analysis of the cDNA sequence indicates that GP1Ib is anchored to the platelet through a single transmembrane domain located within 20 amino acids of the C-terminus of the light chain.
Targets(IC50)	Others
In vitro	The GP1Ib-IIa complex is a Ca <sup>2+</sup> -dependent heterodimer that, on activated platelets, can bind one of the four different adhesive proteins. (i.e. fibrinogen, fibronectin, von Willebrand factor, or vitronectin ).

## Solubility Information

Solubility	DMSO: ≥119.8 mg/mL, Sonication is recommended. ( < 1 mg/ml refers to the product slightly soluble or insoluble)
------------	--

## Preparing Stock Solutions

	1mg	5mg	10mg
1 mM	0.8346 mL	4.1729 mL	8.3459 mL
5 mM	0.1669 mL	0.8346 mL	1.6692 mL
10 mM	0.0835 mL	0.4173 mL	0.8346 mL
50 mM	0.0167 mL	0.0835 mL	0.1669 mL

Please select the appropriate solvent to prepare the stock solution, according to the solubility of the product in different solvents. Please use it as soon as possible.

Note: The dilution table applies only to solid products. For liquid products, please calculate the stock solution based on the stated concentration and/or density.

**Inhibitor · Natural Compounds · Compound Libraries · Recombinant Proteins**

This product is for Research Use Only · Not for Human or Veterinary or Therapeutic Use

Tel:781-999-4286 E\_mail:info@targetmol.com Address:34 Washington Street,Wellesley Hills,MA 02481