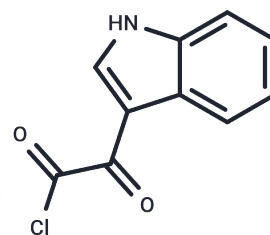


Indole-3-Glyoxylyl Chloride

Chemical Properties

CAS No. :	22980-09-2
Formula:	C ₁₀ H ₆ ClNO ₂
Molecular Weight:	207.61
Storage:	Powder: -20°C for 3 years In solvent: -80°C for 1 year Actual storage temperature shall be subject to the COA.



Biological Description

Description	Indole-3-glyoxylyl chloride (3-Indoleglyoxylyl chloride) can be used in chemical synthesis, such as bisindolylmaleimide.
Targets(IC50)	Autophagy

Solubility Information

Solubility	DMSO: 5.5 mg/mL (26.49 mM), Sonication is recommended. (< 1 mg/ml refers to the product slightly soluble or insoluble)
------------	---

Preparing Stock Solutions

	1mg	5mg	10mg
1 mM	4.8167 mL	24.0836 mL	48.1672 mL
5 mM	0.9633 mL	4.8167 mL	9.6334 mL
10 mM	0.4817 mL	2.4084 mL	4.8167 mL
50 mM	0.0963 mL	0.4817 mL	0.9633 mL

Please select the appropriate solvent to prepare the stock solution, according to the solubility of the product in different solvents. Please use it as soon as possible.

Note: The dilution table applies only to solid products. For liquid products, please calculate the stock solution based on the stated concentration and/or density.

Reference

Nakazono M, et al. Anal Sci. 2003 Jan;19(1):123-7.

Inhibitor · Natural Compounds · Compound Libraries · Recombinant Proteins

This product is for Research Use Only · Not for Human or Veterinary or Therapeutic Use

Tel:781-999-4286 E_mail:info@targetmol.com Address:34 Washington Street,Wellesley Hills,MA 02481