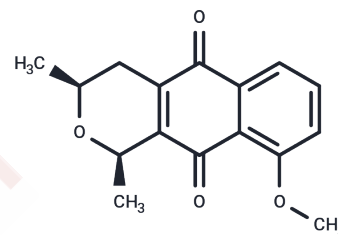


Eleutherin

Chemical Properties

CAS No. :	478-36-4
Formula:	C ₁₆ H ₁₆ O ₄
Molecular Weight:	272.3
Storage:	Store at low temperature Powder: -20°C for 3 years In solvent: -80°C for 1 year <i>Actual storage temperature shall be subject to the COA.</i>



Biological Description

Description	Eleutherin, a natural naphthoquinone derivative, exerts protective effects on human umbilical vein endothelial cells (HUVECs) and inhibits carrageenan-induced hyperalgesia in mice.
Targets(IC50)	Others, Topoisomerase
In vitro	Methods: The MTT assay was used to investigate the effects of eleutherine (0.025-50μM) on C6 cell viability. Results: Eleutherine showed dose- and time-dependent cytotoxicity toward C6 cells, with IC50 values decreasing as treatment duration increased.[1]

Solubility Information

Solubility	DMSO: 12 mg/mL (44.07 mM), Sonication is recommended. (< 1 mg/ml refers to the product slightly soluble or insoluble)
In vivo Formulation	10% DMSO+40% PEG300+5% Tween 80+45% Saline: 1 mg/mL (3.67 mM), Sonication is recommended. <i>Please add the solvents sequentially, clarifying the solution as much as possible before adding the next one. Dissolve by heating and/or sonication if necessary. Working solution is recommended to be prepared and used immediately. The formulation provided above is for reference purposes only. In vivo formulations may vary and should be modified based on specific experimental conditions.</i>

Preparing Stock Solutions

	1mg	5mg	10mg
1 mM	3.6724 mL	18.3621 mL	36.7242 mL
5 mM	0.7345 mL	3.6724 mL	7.3448 mL
10 mM	0.3672 mL	1.8362 mL	3.6724 mL
50 mM	0.0734 mL	0.3672 mL	0.7345 mL

Please select the appropriate solvent to prepare the stock solution, according to the solubility of the product in different solvents. Please use it as soon as possible.

Note: The dilution table applies only to solid products. For liquid products, please calculate the stock solution based on the stated concentration and/or density.

Reference

Shinkai VMT, et al. In Vitro Cytotoxic Effects and Mechanisms of Action of Eleutherine Isolated from Eleutherine plicata Bulb in Rat Glioma C6 Cells. *Molecules*. 2022 Dec 13;27(24):8850. doi: 10.3390/molecules27248850IF: 4.6 Q2 . PMID: 36557983; PMCID: PMC9785660.

Inhibitor · Natural Compounds · Compound Libraries · Recombinant Proteins

This product is for Research Use Only · Not for Human or Veterinary or Therapeutic Use

Tel:781-999-4286 E_mail:info@targetmol.com Address:34 Washington Street,Wellesley Hills,MA 02481