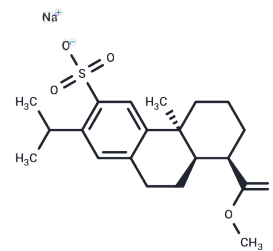


## Ecabet Sodium

## Chemical Properties

CAS No. :	86408-72-2
Formula:	C <sub>20</sub> H <sub>27</sub> NaO <sub>5</sub> S
Molecular Weight:	402.48
Storage:	Powder: -20°C for 3 years   In solvent: -80°C for 1 year Actual storage temperature shall be subject to the COA.



## Biological Description

Description	Ecabet Sodium (TA-2711) is a potential new agent in the management of distal colitis.
Targets(IC50)	Apoptosis, Reactive Oxygen Species, Antibacterial, ROS
Kinase Assay	The inhibition profile of Cabozantinib against a broad panel of 270 human kinases is determined using luciferase-coupled chemiluminescence, 33P-phosphoryl transfer, or AlphaScreen technology. Recombinant human full-length, glutathione S-transferase tag, or histidine tag fusion proteins are used, and IC50 values are determined by measuring phosphorylation of peptide substrate poly(Glu, Tyr) at ATP concentrations at or below the Km for each respective kinase. The mechanism of kinase inhibition is evaluated using the AlphaScreen Assay by determining the IC50 values over a range of ATP concentrations[2].

## Solubility Information

Solubility	DMSO: 50 mg/mL (124.23 mM), Sonication is recommended. (< 1 mg/ml refers to the product slightly soluble or insoluble)
In vivo Formulation	10% DMSO+40% PEG300+5% Tween 80+45% Saline: 2 mg/mL (4.97 mM), Sonication is recommended. <i>Please add the solvents sequentially, clarifying the solution as much as possible before adding the next one. Dissolve by heating and/or sonication if necessary. Working solution is recommended to be prepared and used immediately. The formulation provided above is for reference purposes only. In vivo formulations may vary and should be modified based on specific experimental conditions.</i>

### Preparing Stock Solutions

---

	1mg	5mg	10mg
1 mM	2.4846 mL	12.423 mL	24.846 mL
5 mM	0.4969 mL	2.4846 mL	4.9692 mL
10 mM	0.2485 mL	1.2423 mL	2.4846 mL
50 mM	0.0497 mL	0.2485 mL	0.4969 mL

---

Please select the appropriate solvent to prepare the stock solution, according to the solubility of the product in different solvents. Please use it as soon as possible.

Note: The dilution table applies only to solid products. For liquid products, please calculate the stock solution based on the stated concentration and/or density.

#### Reference

Lawrance IC. J Gastroenterol Hepatol. 2010 Jul;25(7):1182-4.

**Inhibitor · Natural Compounds · Compound Libraries · Recombinant Proteins**

This product is for Research Use Only · Not for Human or Veterinary or Therapeutic Use

Tel:781-999-4286 E\_mail:info@targetmol.com Address:34 Washington Street,Wellesley Hills,MA 02481