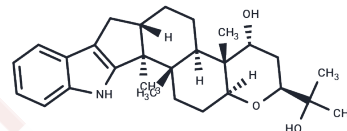


Terpendole E

Chemical Properties

CAS No. : 167427-23-8
 Formula: C₂₈H₃₉NO₃
 Molecular Weight: 437.61
 Storage: Powder: -20°C for 3 years | In solvent: -80°C for 1 year
 Actual storage temperature shall be subject to the COA.



Biological Description

Description	Terpendole E is an atypical L5 site inhibitor.
Targets(IC50)	Others,Kinesin

Preparing Stock Solutions

	1mg	5mg	10mg
1 mM	2.2851 mL	11.4257 mL	22.8514 mL
5 mM	0.457 mL	2.2851 mL	4.5703 mL
10 mM	0.2285 mL	1.1426 mL	2.2851 mL
50 mM	0.0457 mL	0.2285 mL	0.457 mL

Please select the appropriate solvent to prepare the stock solution, according to the solubility of the product in different solvents. Please use it as soon as possible.

Note: The dilution table applies only to solid products. For liquid products, please calculate the stock solution based on the stated concentration and/or density.

Inhibitor · Natural Compounds · Compound Libraries · Recombinant Proteins

This product is for Research Use Only · Not for Human or Veterinary or Therapeutic Use

Tel:781-999-4286 E_mail:info@targetmol.com Address:34 Washington Street,Wellesley Hills,MA 02481