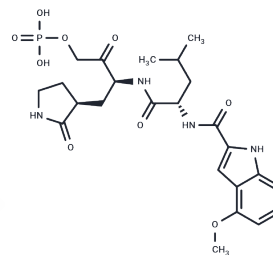


## Lufotrelvir

## Chemical Properties

CAS No. :	2468015-78-1
Formula:	C <sub>24</sub> H <sub>33</sub> N <sub>4</sub> O <sub>9</sub> P
Molecular Weight:	552.51
Storage:	Powder: -20°C for 3 years   In solvent: -80°C for 1 year Actual storage temperature shall be subject to the COA.



## Biological Description

Description	Lufotrelvir (PF-07304814) is a small molecule inhibitor of the SARS CoV-2 3CL protease for the treatment of COVID-19 with broad-spectrum anti-SARS activity for the study of novel coronavirus infections.
Targets(IC50)	SARS-CoV
In vivo	After intravenous administration to rats, dogs, and monkeys, Lufotrelvir exhibits favorable cardiovascular safety and pharmacokinetic parameters[1].

## Solubility Information

Solubility	DMSO: 100 mg/mL (180.99 mM), Sonification is recommended. H <sub>2</sub> O: 30 mg/mL (54.3 mM), Sonification is recommended. ( $< 1$ mg/ml refers to the product slightly soluble or insoluble)
In vivo Formulation	10% DMSO+40% PEG300+5% Tween 80+45% Saline: 4 mg/mL (7.24 mM), Sonication is recommended. <i>Please add the solvents sequentially, clarifying the solution as much as possible before adding the next one. Dissolve by heating and/or sonication if necessary. Working solution is recommended to be prepared and used immediately. The formulation provided above is for reference purposes only. In vivo formulations may vary and should be modified based on specific experimental conditions.</i>

### Preparing Stock Solutions

---

	1mg	5mg	10mg
1 mM	1.8099 mL	9.0496 mL	18.0992 mL
5 mM	0.362 mL	1.8099 mL	3.6198 mL
10 mM	0.181 mL	0.905 mL	1.8099 mL
50 mM	0.0362 mL	0.181 mL	0.362 mL

---

Please select the appropriate solvent to prepare the stock solution, according to the solubility of the product in different solvents. Please use it as soon as possible.

Note: The dilution table applies only to solid products. For liquid products, please calculate the stock solution based on the stated concentration and/or density.

### Reference

Koen Vandyck, et al. Considerations for the discovery and development of 3-chymotrypsin-like cysteine protease inhibitors targeting SARS-CoV-2 infection. *Curr Opin Virol.* 2021 Apr 27;49:36-40.

Robinson P, et al. Safety, Tolerability, and Pharmacokinetics of Single and Multiple Ascending Intravenous Infusions of PF-07304814 (Lufotrelvir) in Participants Hospitalized With COVID-19. *Open Forum Infect Dis.* 2023 Jul 10;10(8):ofad355.

**Inhibitor · Natural Compounds · Compound Libraries · Recombinant Proteins**

This product is for Research Use Only · Not for Human or Veterinary or Therapeutic Use

Tel:781-999-4286 E\_mail:info@targetmol.com Address:34 Washington Street,Wellesley Hills,MA 02481