

ELA-11 (human) acetate(1784687-32-6 free base)

Chemical Properties

CAS No. :

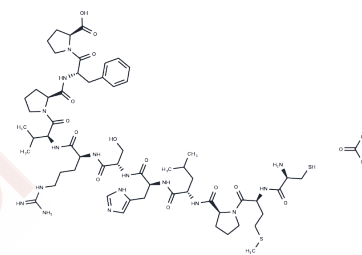
Formula: C60H94N16O15S2

Molecular Weight: 1343.61

Keep away from moisture

Storage: Powder: -20°C for 3 years | In solvent: -80°C for 1 year

Actual storage temperature shall be subject to the COA.



Biological Description

Description	ELA-11 (human) acetate high affinity apelin receptor agonist (Ki = 14 nM). Bioactive fragment of ELA-32. Inhibits forskolin-induced cAMP production and stimulates β -arrestin recruitment in vitro.
Targets(IC50)	Apelin receptor, Arrestin

Solubility Information

Solubility	DMSO: 10 mM, Sonication is recommended. (< 1 mg/ml refers to the product slightly soluble or insoluble)
------------	--

Preparing Stock Solutions

	1mg	5mg	10mg
1 mM	0.7443 mL	3.7213 mL	7.4426 mL
5 mM	0.1489 mL	0.7443 mL	1.4885 mL
10 mM	0.0744 mL	0.3721 mL	0.7443 mL
50 mM	0.0149 mL	0.0744 mL	0.1489 mL

Please select the appropriate solvent to prepare the stock solution, according to the solubility of the product in different solvents. Please use it as soon as possible.

Note: The dilution table applies only to solid products. For liquid products, please calculate the stock solution based on the stated concentration and/or density.

Reference

Yang et al (2017) Elabela/Toddler is an endogenous agonist of the apelin APJ receptor in the adult cardiovascular system, and exogenous administration of the peptide compensates for the downregulation of its expression in pulmonary arterial hypertension. Circulation 135 1160 PMID:

Murza et al (2016) Discovery and structure-activity relationship of a bioactive fragment of ELABELA that modulates vascular and cardiac functions. J.Med.Chem. 59 2962 PMID:

Inhibitor · Natural Compounds · Compound Libraries · Recombinant Proteins

This product is for Research Use Only· Not for Human or Veterinary or Therapeutic Use

Tel:781-999-4286 E_mail:info@targetmol.com Address:34 Washington Street,Wellesley Hills,MA 02481