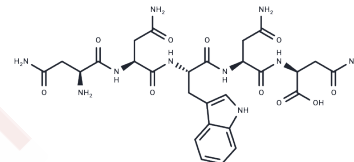


Extracellular Death Factor

Chemical Properties

CAS No. :	960129-66-2
Formula:	C ₂₇ H ₃₆ N ₁₀ O ₁₀
Molecular Weight:	660.64
Storage:	Keep away from moisture Powder: -20°C for 3 years In solvent: -80°C for 1 year <small>Actual storage temperature shall be subject to the COA.</small>



Biological Description

Description	Programmed cell death in bacteria is dependent on a system of cell-to-cell communication termed quorum sensing. Extracellular death factor (EDF) is a linear pentapeptide that communicating cells produce and release, which upon reaching a sufficient concentration activates the cell death pathway in a subset of cells. It is sensitive to extreme pH, high temperatures, and other stressful conditions. At 2.5 ng/ml, EDF has been shown to facilitate mazEF-mediated cell death, significantly reducing population size in E. coli cultures.
Targets(IC50)	Antibacterial

Solubility Information

Solubility	Methanol: Soluble Ethanol: Soluble DMSO: Soluble DMF: Soluble H ₂ O: Soluble (< 1 mg/ml refers to the product slightly soluble or insoluble)
------------	---

Preparing Stock Solutions

	1mg	5mg	10mg
1 mM	1.5137 mL	7.5684 mL	15.1368 mL
5 mM	0.3027 mL	1.5137 mL	3.0274 mL
10 mM	0.1514 mL	0.7568 mL	1.5137 mL
50 mM	0.0303 mL	0.1514 mL	0.3027 mL

Please select the appropriate solvent to prepare the stock solution, according to the solubility of the product in different solvents. Please use it as soon as possible.

Note: The dilution table applies only to solid products. For liquid products, please calculate the stock solution based on the stated concentration and/or density.

Inhibitor · Natural Compounds · Compound Libraries · Recombinant Proteins

This product is for Research Use Only · Not for Human or Veterinary or Therapeutic Use

Tel:781-999-4286 E_mail:info@targetmol.com Address:34 Washington Street,Wellesley Hills,MA 02481