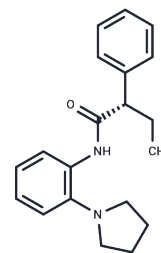


ML252

Chemical Properties

CAS No. : 1392494-64-2
 Formula: C₂₀H₂₄N₂O
 Molecular Weight: 308.42
 Storage: Powder: -20°C for 3 years | In solvent: -80°C for 1 year
 Actual storage temperature shall be subject to the COA.



Biological Description

Description	ML252 is a selective potassium channel inhibitor, specifically targeting the KCNQ2 channel (Kv7.2) with an IC ₅₀ value of 69 nM. Additionally, ML252 demonstrates inhibitory activity against Cytochrome P450 isoforms, including IC ₅₀ values of 6.1 nM (CYP1A2), 18.9 nM (CYP2C9), 3.9 nM (CYP3A4), and 19.9 nM (CYP2D6).
Targets(IC ₅₀)	Others,Cytochromes P450,Potassium Channel

Preparing Stock Solutions

	1mg	5mg	10mg
1 mM	3.2423 mL	16.2117 mL	32.4233 mL
5 mM	0.6485 mL	3.2423 mL	6.4847 mL
10 mM	0.3242 mL	1.6212 mL	3.2423 mL
50 mM	0.0648 mL	0.3242 mL	0.6485 mL

Please select the appropriate solvent to prepare the stock solution, according to the solubility of the product in different solvents. Please use it as soon as possible.

Note: The dilution table applies only to solid products. For liquid products, please calculate the stock solution based on the stated concentration and/or density.

Inhibitor · Natural Compounds · Compound Libraries · Recombinant Proteins

This product is for Research Use Only · Not for Human or Veterinary or Therapeutic Use

Tel:781-999-4286 E_mail:info@targetmol.com Address:34 Washington Street,Wellesley Hills,MA 02481