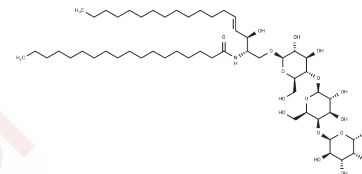


C18 Globotriaosylceramide (d18:1/18:0)

Chemical Properties

| | |
|-------------------|---|
| CAS No. : | 69283-33-6 |
| Formula: | C54H101NO18 |
| Molecular Weight: | 1052.391 |
| Storage: | Powder: -20°C for 3 years In solvent: -80°C for 1 year Actual storage temperature shall be subject to the COA. |



Biological Description

| | |
|---------------|--|
| Description | C18 globotriaosylceramide is an endogenous sphingolipid found in mammalian cell membranes that is synthesized from lactosylceramide . It inhibits aggregation of human neutrophils induced by phorbol 12-myristate 13-acetate (PMA; 10008014) when used at a concentration of 1 μ M. C18 globotriaosylceramide acts as a receptor for Shiga toxin in B cell-derived Raji cells and THP-1 monocytes. It accumulates in the brain, heart, kidney, liver, lung, and spleen in a mouse model of Fabry disease, a lysosomal storage disorder characterized by a deficiency in the enzyme α -galactosidase A. C18 globotriaosylceramide also accumulates in endothelial cells, pericytes, vascular smooth muscle cells, renal epithelial cells, dorsal ganglia neuronal cells, and myocardial cells in patients with Fabry disease. |
| Targets(IC50) | Others |

Solubility Information

| | |
|------------|--|
| Solubility | Chloroform:Methanol (2:1): Soluble DMSO: Soluble (< 1 mg/ml refers to the product slightly soluble or insoluble) |
|------------|--|

Preparing Stock Solutions

| | 1mg | 5mg | 10mg |
|-------|------------|------------|-------------|
| 1 mM | 0.9502 mL | 4.7511 mL | 9.5022 mL |
| 5 mM | 0.190 mL | 0.9502 mL | 1.9004 mL |
| 10 mM | 0.095 mL | 0.4751 mL | 0.9502 mL |
| 50 mM | 0.019 mL | 0.095 mL | 0.190 mL |

Please select the appropriate solvent to prepare the stock solution, according to the solubility of the product in different solvents. Please use it as soon as possible.

Note: The dilution table applies only to solid products. For liquid products, please calculate the stock solution based on the stated concentration and/or density.

Inhibitor · Natural Compounds · Compound Libraries · Recombinant Proteins

This product is for Research Use Only · Not for Human or Veterinary or Therapeutic Use

Tel:781-999-4286 E_mail:info@targetmol.com Address:34 Washington Street,Wellesley Hills,MA 02481