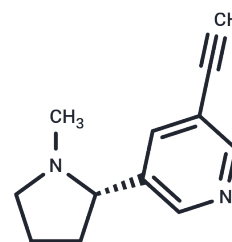


Altinicline

Chemical Properties

CAS No. :	179120-92-4
Formula:	C ₁₂ H ₁₄ N ₂
Molecular Weight:	186.25
Storage:	Powder: -20°C for 3 years In solvent: -80°C for 1 year Actual storage temperature shall be subject to the COA.



Biological Description

Description	Altinicline can bind with neuronal nicotinic acetylcholine receptors; SIB-1765F - fumarate.
Targets(IC50)	Others

Preparing Stock Solutions

	1mg	5mg	10mg
1 mM	5.3691 mL	26.8456 mL	53.6913 mL
5 mM	1.0738 mL	5.3691 mL	10.7383 mL
10 mM	0.5369 mL	2.6846 mL	5.3691 mL
50 mM	0.1074 mL	0.5369 mL	1.0738 mL

Please select the appropriate solvent to prepare the stock solution, according to the solubility of the product in different solvents. Please use it as soon as possible.

Note: The dilution table applies only to solid products. For liquid products, please calculate the stock solution based on the stated concentration and/or density.

Reference

- Cosford ND, Bleicher L, Vernier JM, Chavez-Noriega L, Rao TS, Siegel RS, Suto C, Washburn M, Lloyd GK, McDonald IA. Recombinant human receptors and functional assays in the discovery of altinicline (SIB-1508Y), a novel acetylcholine-gated ion channel (nAChR) agonist. *Pharm Acta Helv.* 2000 Mar;74(2-3):125-30. PubMed PMID: 10812948.
- Rao TS, Adams PB, Correa LD, Santori EM, Saccaan AI, Reid RT, Cosford ND. Pharmacological characterization of (S)-(-)-2-5-ethynyl-3-(1-methyl-2-pyrrolidinyl)pyridine HCl (SIB-1508Y, Altinicline), a novel nicotinic acetylcholine receptor agonist. *Brain Res.* 2008 Oct 9;1234:16-24. doi: 10.1016/j.brainres.2008.07.063. Epub 2008 Jul 28. PubMed PMID: 18692487.
- Wagner FF, Comins DL. Expedient five-step synthesis of SIB-1508Y from natural nicotine. *J Org Chem.* 2006 Oct 27; 71(22):8673-5. PubMed PMID: 17064057.

Inhibitor · Natural Compounds · Compound Libraries · Recombinant Proteins

This product is for Research Use Only · Not for Human or Veterinary or Therapeutic Use

Tel:781-999-4286 E_mail:info@targetmol.com Address:34 Washington Street,Wellesley Hills,MA 02481