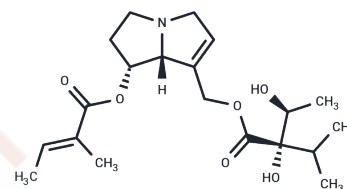


Symphytine

Chemical Properties

CAS No. :	22571-95-5
Formula:	C ₂₀ H ₃₁ N ₁ O ₆
Molecular Weight:	381.46
Storage:	Powder: -20°C for 3 years In solvent: -80°C for 1 year Actual storage temperature shall be subject to the COA.



Biological Description

Description	Symphytine is a natural inducer of hepatic tumors. Symphytine interacts with DNA in liver endothelial cells and hepatocytes, resulting in DNA damage, mutation induction, and cancer development.
Targets(IC50)	Others

Preparing Stock Solutions

	1mg	5mg	10mg
1 mM	2.6215 mL	13.1075 mL	26.2151 mL
5 mM	0.5243 mL	2.6215 mL	5.243 mL
10 mM	0.2622 mL	1.3108 mL	2.6215 mL
50 mM	0.0524 mL	0.2622 mL	0.5243 mL

Please select the appropriate solvent to prepare the stock solution, according to the solubility of the product in different solvents. Please use it as soon as possible.

Note: The dilution table applies only to solid products. For liquid products, please calculate the stock solution based on the stated concentration and/or density.

Reference

- Hirono I, Haga M, Fujii M, Matsuura S, Matsubara N, Nakayama M, Furuya T, Hikichi M, Takanashi H, Uchida E, Hosaka S, Ueno I. Induction of hepatic tumors in rats by senkirkine and symphytine. *J Natl Cancer Inst.* 1979 Aug;63(2):469-72. PubMed PMID: 287835.
- Brauchli J, Lüthy J, Zweifel U, Schlatter C. Pyrrolizidine alkaloids from *Symphytum officinale* L. and their percutaneous absorption in rats. *Experientia.* 1982 Sep 15;38(9):1085-7. PubMed PMID: 7128756.
- Stickel F, Seitz HK. The efficacy and safety of comfrey. *Public Health Nutr.* 2000 Dec;3(4A):501-8. Review. PubMed PMID: 11276298.
- Kim NC, Oberlies NH, Brine DR, Handy RW, Wani MC, Wall ME. Isolation of symlandine from the roots of common comfrey (*Symphytum officinale*) using countercurrent chromatography. *J Nat Prod.* 2001 Feb;64(2):251-3. PubMed PMID: 11430014.

Inhibitor · Natural Compounds · Compound Libraries · Recombinant Proteins

This product is for Research Use Only · Not for Human or Veterinary or Therapeutic Use

Tel:781-999-4286 E_mail:info@targetmol.com Address:34 Washington Street,Wellesley Hills,MA 02481