

Lisinopril

Chemical Properties

CAS No. : 76547-98-3

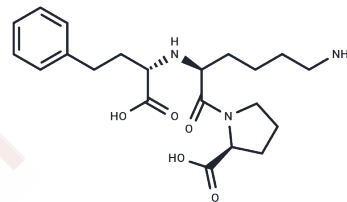
Formula: C₂₁H₃₁N₃O₅

Molecular Weight: 405.49

Storage: Store at low temperature, Keep away from direct sunlight, Store under nitrogen

Powder: -20°C for 3 years | In solvent: -80°C for 1 year

Actual storage temperature shall be subject to the COA.



Biological Description

Description	Lisinopril (Prinivil), the angiotensin-converting enzyme (ACE) inhibitor, is used primarily in the treatment of high heart failure, blood pressure, and heart attacks. It is also used for preventing eye and kidney complications in people with diabetes.
Targets(IC50)	RAAS, Angiotensin-converting Enzyme (ACE)

Solubility Information

Solubility	DMSO: < 1 mg/mL (insoluble or slightly soluble), H ₂ O: 11.1 mg/mL (27.37 mM), Sonication is recommended. (< 1 mg/ml refers to the product slightly soluble or insoluble)
------------	--

Preparing Stock Solutions

	1mg	5mg	10mg
1 mM	2.4662 mL	12.3308 mL	24.6615 mL
5 mM	0.4932 mL	2.4662 mL	4.9323 mL
10 mM	0.2466 mL	1.2331 mL	2.4662 mL
50 mM	0.0493 mL	0.2466 mL	0.4932 mL

Please select the appropriate solvent to prepare the stock solution, according to the solubility of the product in different solvents. Please use it as soon as possible.

Note: The dilution table applies only to solid products. For liquid products, please calculate the stock solution based on the stated concentration and/or density.

Reference

Akintunde JK, Bolarin OE, Akintunde DG. Garlic capsule and selenium-vitamins ACE combination therapy modulate key antioxidant proteins and cellular adenosine triphosphate in lisinopril-induced lung damage in rats. *Drug Metabol Personal Ther.* 2016 Mar 1;31(1):47-54. doi: 10.1515/dmpt-2015-0035. PubMed PMID: 26943616.

Jiang M, Huang CR, Wang Q, et al. Combined spectroscopies and molecular docking approach to characterizing the binding interaction between lisinopril and bovine serum albumin. *Luminescence.* 2016 Mar;31(2):468-77. doi: 10.1002/bio.2984. Epub 2015 Aug 24. PubMed PMID: 26300521.

Simonyi G, Ferenci T. [Ramipril plus amlodipine and lisinopril plus amlodipine fixed dose combinations and patient's adherence]. *Orv Hetil.* 2016 Jan 3;157(1):30-4. doi: 10.1556/650.2016.30344. Hungarian. PubMed PMID: 26708684.

Cinelli E, Bongianni F, Pantaleo T, Mutolo D. The cough reflex is upregulated by lisinopril microinjected into the caudal nucleus tractus solitarii of the rabbit. *Respir Physiol Neurobiol.* 2015 Dec;219:9-17. doi: 10.1016/j.resp.2015.07.013. Epub 2015 Jul 30. PubMed PMID: 26234277.

Inhibitor · Natural Compounds · Compound Libraries · Recombinant Proteins

This product is for Research Use Only. Not for Human or Veterinary or Therapeutic Use

Tel:781-999-4286 E_mail:info@targetmol.com Address:34 Washington Street,Wellesley Hills,MA 02481