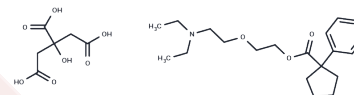


Carbetapentane citrate

Chemical Properties

CAS No. : 23142-01-0
 Formula: C₂₀H₃₁NO₃·C₆H₈O₇
 Molecular Weight: 525.59
 Storage: Powder: -20°C for 3 years | In solvent: -80°C for 1 year
Actual storage temperature shall be subject to the COA.



Biological Description

Description	Carbetapentane citrate (Pentoxyverine citrate), an antitussive (cough suppressant), is frequently used for a cough related to illnesses like the common cold.
Targets(IC50)	AChR, Sigma receptor
In vivo	Pentoxyverine is an agonist of the σ receptor (σ 1 subtype) and an antagonist of the muscarinic acetylcholine receptor (M1 subtype). It possesses anticholinergic properties, theoretically facilitating alveolar relaxation and reducing mucus production. Pentoxyverine (Carbetapentane) Citrate exhibits local anesthetic effects and atropine-like qualities, providing significant suppression of acute cough associated with common upper respiratory tract infections. Furthermore, Pentoxyverine inhibits the cough reflex within the central nervous system, though its precise mechanism of action remains unclear.

Solubility Information

Solubility	DMSO: 65 mg/mL (123.67 mM), Sonication is recommended. (< 1 mg/ml refers to the product slightly soluble or insoluble)
In vivo Formulation	10% DMSO+40% PEG300+5% Tween-80+45% Saline: 2.5 mg/mL (4.76 mM), Sonication is recommended. <i>Please add the solvents sequentially, clarifying the solution as much as possible before adding the next one. Dissolve by heating and/or sonication if necessary. Working solution is recommended to be prepared and used immediately. The formulation provided above is for reference purposes only. In vivo formulations may vary and should be modified based on specific experimental conditions.</i>

Preparing Stock Solutions

	1mg	5mg	10mg
1 mM	1.9026 mL	9.5131 mL	19.0262 mL
5 mM	0.3805 mL	1.9026 mL	3.8052 mL
10 mM	0.1903 mL	0.9513 mL	1.9026 mL
50 mM	0.0381 mL	0.1903 mL	0.3805 mL

Please select the appropriate solvent to prepare the stock solution, according to the solubility of the product in different solvents. Please use it as soon as possible.

Note: The dilution table applies only to solid products. For liquid products, please calculate the stock solution based on the stated concentration and/or density.

Reference

Dönmez OA, et al. Talanta, 2011, 83(5), 1601-1605.

Brown C, et al. Br J Pharmacol, 2004, 141(2), 233-240.

Inhibitor · Natural Compounds · Compound Libraries · Recombinant Proteins

This product is for Research Use Only · Not for Human or Veterinary or Therapeutic Use

Tel:781-999-4286 E_mail:info@targetmol.com Address:34 Washington Street,Wellesley Hills,MA 02481