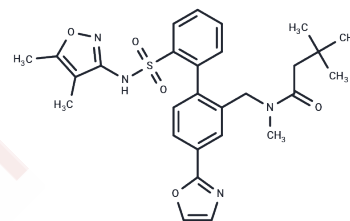


Edonentan

Chemical Properties

CAS No. :	210891-04-6
Formula:	C ₂₈ H ₃₂ N ₄ O ₅ S
Molecular Weight:	536.64
Storage:	Powder: -20°C for 3 years In solvent: -80°C for 1 year Actual storage temperature shall be subject to the COA.



Biological Description

Description	Edonentan is A potent endothelin A (ETA) receptor antagonist that can be used to study heart failure.
Targets(IC50)	Endothelin Receptor

Solubility Information

Solubility	DMSO: 55 mg/mL (102.49 mM),Sonication is recommended. (< 1 mg/ml refers to the product slightly soluble or insoluble)
------------	--

Preparing Stock Solutions

	1mg	5mg	10mg
1 mM	1.8634 mL	9.3172 mL	18.6345 mL
5 mM	0.3727 mL	1.8634 mL	3.7269 mL
10 mM	0.1863 mL	0.9317 mL	1.8634 mL
50 mM	0.0373 mL	0.1863 mL	0.3727 mL

Please select the appropriate solvent to prepare the stock solution, according to the solubility of the product in different solvents. Please use it as soon as possible.

Note: The dilution table applies only to solid products. For liquid products, please calculate the stock solution based on the stated concentration and/or density.

Reference

Hulpke-Wette M, et al. BMS-193884 and BMS-207940 Bristol-Myers Squibb. *Curr Opin Investig Drugs*. 2002 Jul;3(7):1057-61.

Davenport AP, et al. Endothelin. *Pharmacol Rev*. 2016 Apr;68(2):357-418.

Mathews WB, Murugesan N, Xia J, Scheffel U, Hilton J, Ravert HT, Dannals RF, Szabo Z. Synthesis and in vivo evaluation of novel PET radioligands for imaging the endothelin-A receptor. *J Nucl Med*. 2008 Sep;49(9):1529-36. doi: 10.2967/jnumed.108.051565. Epub 2008 Aug 14. PubMed PMID: 18703610.

Shi Y, Huang MH, Macor JE, Hughes DE. Characterization of the in vitro atropisomeric interconversion rates of an endothelin A antagonist by enantioselective liquid chromatography. *J Chromatogr A*. 2005 Jun 17;1078(1-2):67-73. PubMed PMID: 16007983.

Inhibitor · Natural Compounds · Compound Libraries · Recombinant Proteins

This product is for Research Use Only · Not for Human or Veterinary or Therapeutic Use

Tel:781-999-4286 E_mail:info@targetmol.com Address:34 Washington Street,Wellesley Hills,MA 02481