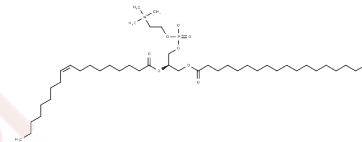


SOPC

Chemical Properties

CAS No. :	56421-10-4
Formula:	C44H86NO8P
Molecular Weight:	788.13
Storage:	Store at low temperature Powder: -20°C for 3 years In solvent: -80°C for 1 year <small>Actual storage temperature shall be subject to the COA.</small>



Biological Description

Description	SOPC is an asymmetrical phospholipid composed of a saturated fatty acid, stearic acid (18:0), at the sn-1 position and an unsaturated fatty acid, oleic acid (18:1), at the sn-2 position, SOPC is widely applied in membrane biology, liposome construction, and lipid-protein interaction research to model biological membranes, investigate bilayer dynamics, and support diverse biochemical, biophysical, and pharmaceutical formulation studies.
Targets(IC50)	Others

Solubility Information

Solubility	DMSO: 1.6 mg/mL (2.03 mM), Sonication is recommended. (< 1 mg/ml refers to the product slightly soluble or insoluble)
------------	--

Preparing Stock Solutions

	1mg	5mg	10mg
1 mM	1.2688 mL	6.3441 mL	12.6883 mL
5 mM	0.2538 mL	1.2688 mL	2.5377 mL
10 mM	0.1269 mL	0.6344 mL	1.2688 mL
50 mM	0.0254 mL	0.1269 mL	0.2538 mL

Please select the appropriate solvent to prepare the stock solution, according to the solubility of the product in different solvents. Please use it as soon as possible.

Note: The dilution table applies only to solid products. For liquid products, please calculate the stock solution based on the stated concentration and/or density.

Reference

Álvarez-Benedicto, et al. Optimization of phospholipid chemistry for improved lipid nanoparticle (LNP) delivery of messenger RNA (mRNA). *Biomater. Sci.* 10(2), 549-559 (2022).

Tanaka, et al. Neutral biodegradable lipid-envelope-type nanoparticle using vitamin A-Scaffold for nuclear targeting of plasmid DNA. *Biomaterials* 35(5), 1755-1761 (2014).

Inhibitor · Natural Compounds · Compound Libraries · Recombinant Proteins

This product is for Research Use Only · Not for Human or Veterinary or Therapeutic Use

Tel:781-999-4286 E_mail:info@targetmol.com Address:34 Washington Street,Wellesley Hills,MA 02481