

BI-0474

Chemical Properties

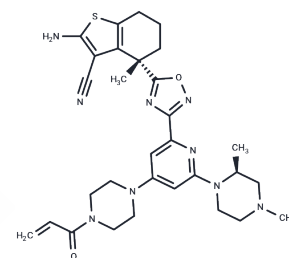
CAS No. : 2750570-55-7

Formula: C₃₀H₃₇N₉O₂S

Molecular Weight: 587.74

Storage: Powder: -20°C for 3 years | In solvent: -80°C for 1 year

Actual storage temperature shall be subject to the COA.



Biological Description

Description	BI-0474 is a potent KRASG12C inhibitor that inhibits GDP-KRAS::SOS1 protein-protein interactions with an IC ₅₀ value of 7.0 nM. BI-0474 exhibits significant antiproliferative activity against NCI-H358 cells harboring the G12C mutation, and shows significant anti-tumor activity in a non-small cell lung cancer xenograft model. activity. BI-0474 can be used for cancer research.
Targets(IC ₅₀)	Raf, Ras, Kras
In vitro	BI-0474 (1-10,000 nM; 3 days; NCI-H358 cells carrying a G12C mutation) inhibited the proliferation of NCI-H358 cells with an EC ₅₀ of 26 nM.[1]
In vivo	BI-0474 (40 mg/kg; i.p.; once daily for 3 days; NMRI nude mice) demonstrates anti-tumor efficacy and pharmacodynamic biomarker modulation, resulting in the induction of programmed cell death in this xenograft model.[1]

Preparing Stock Solutions

	1mg	5mg	10mg
1 mM	1.7014 mL	8.5072 mL	17.0143 mL
5 mM	0.3403 mL	1.7014 mL	3.4029 mL
10 mM	0.1701 mL	0.8507 mL	1.7014 mL
50 mM	0.034 mL	0.1701 mL	0.3403 mL

Please select the appropriate solvent to prepare the stock solution, according to the solubility of the product in different solvents. Please use it as soon as possible.

Note: The dilution table applies only to solid products. For liquid products, please calculate the stock solution based on the stated concentration and/or density.

Reference

Bröker J, et al. Fragment Optimization of Reversible Binding to the Switch II Pocket on KRAS Leads to a Potent, In Vivo Active KRASG12C Inhibitor. J Med Chem. 2022 Oct 27.

Inhibitor · Natural Compounds · Compound Libraries · Recombinant Proteins

This product is for Research Use Only · Not for Human or Veterinary or Therapeutic Use

Tel:781-999-4286 E_mail:info@targetmol.com Address:34 Washington Street,Wellesley Hills,MA 02481